

Supplementary Data

This supplementary data is a part of a paper entitled “Structural Elucidation, Antioxidant Properties, and *In Silico* Molecular Docking of Schiff Base Complexes Derived from Naphthalene-1,8-diamine and Terephthalaldehyde”.

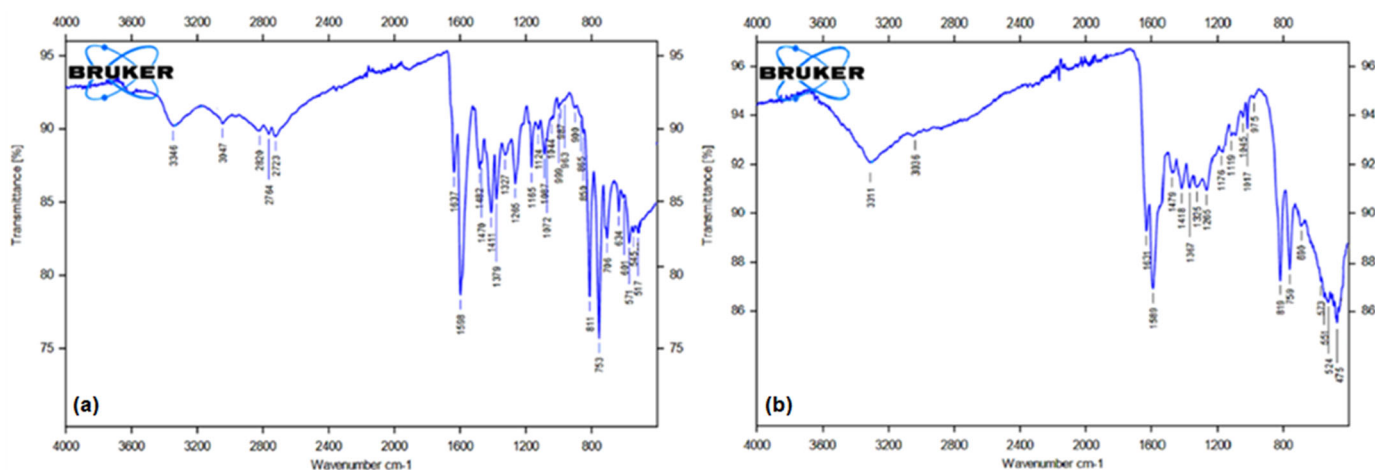
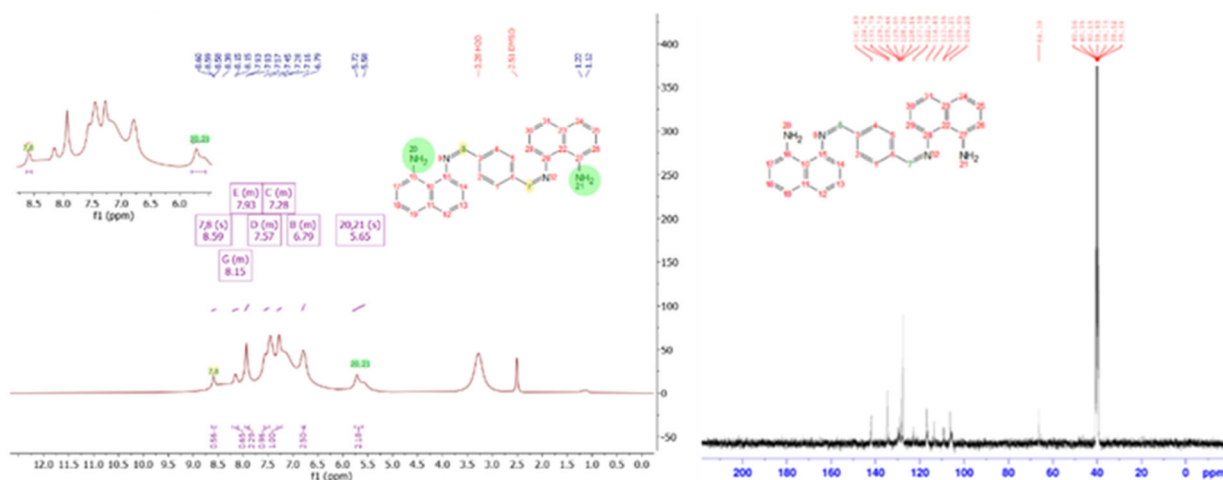


Fig S1. (a) FTIR spectra of ligand and (b) Co-complex



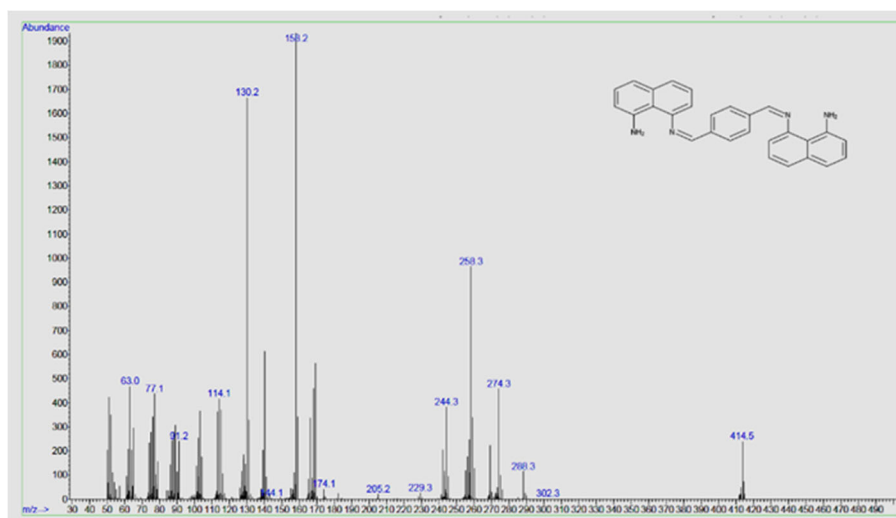


Fig S3. Mass spectrometry analysis of the synthesized ligand

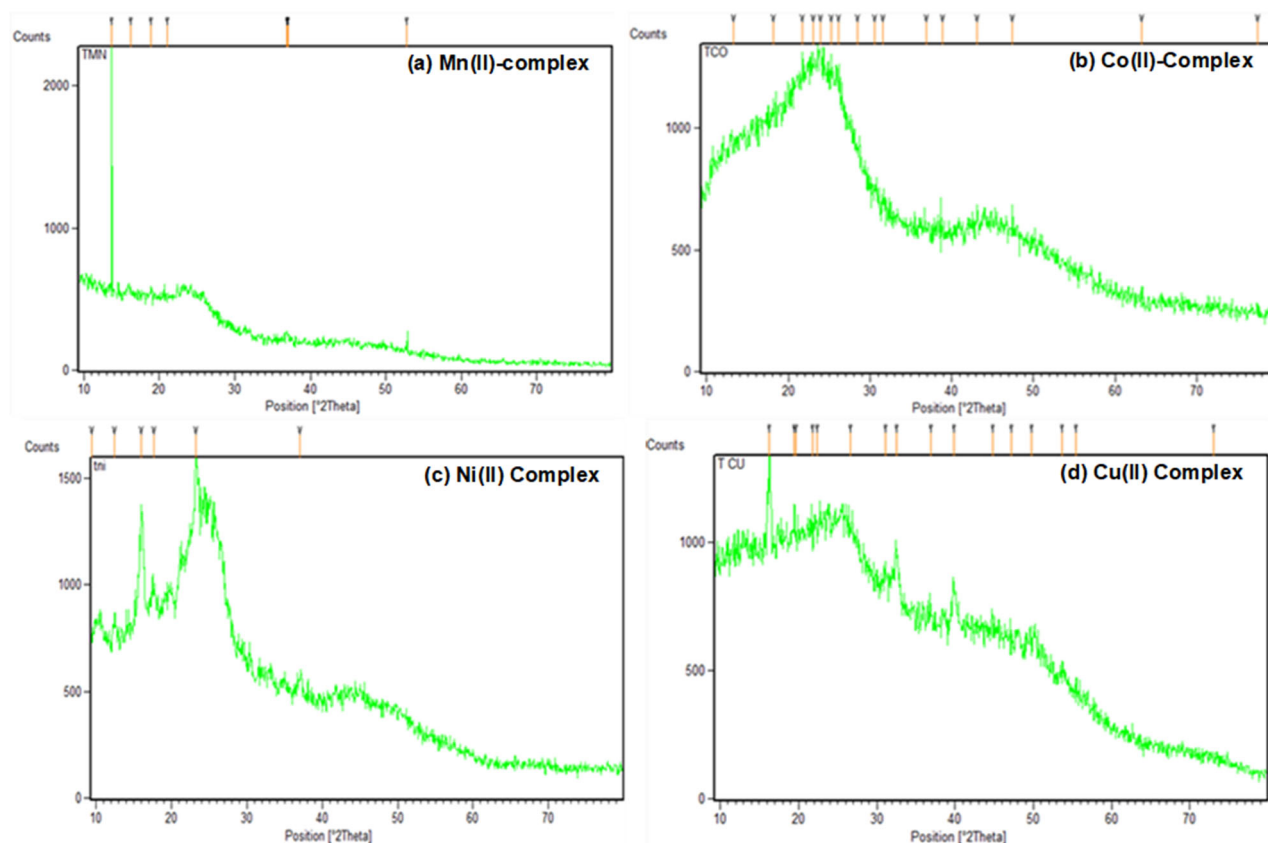


Fig S4. X-ray diffraction pattern of some synthesized complexes