

Supplementary Data

This supplementary data is a part of a paper entitled “Using Alkylammonium Salt to Enhance the Adsorption Potential for Ca-Montmorillonite Clay to Remove Color Effluent from Wastewater”.

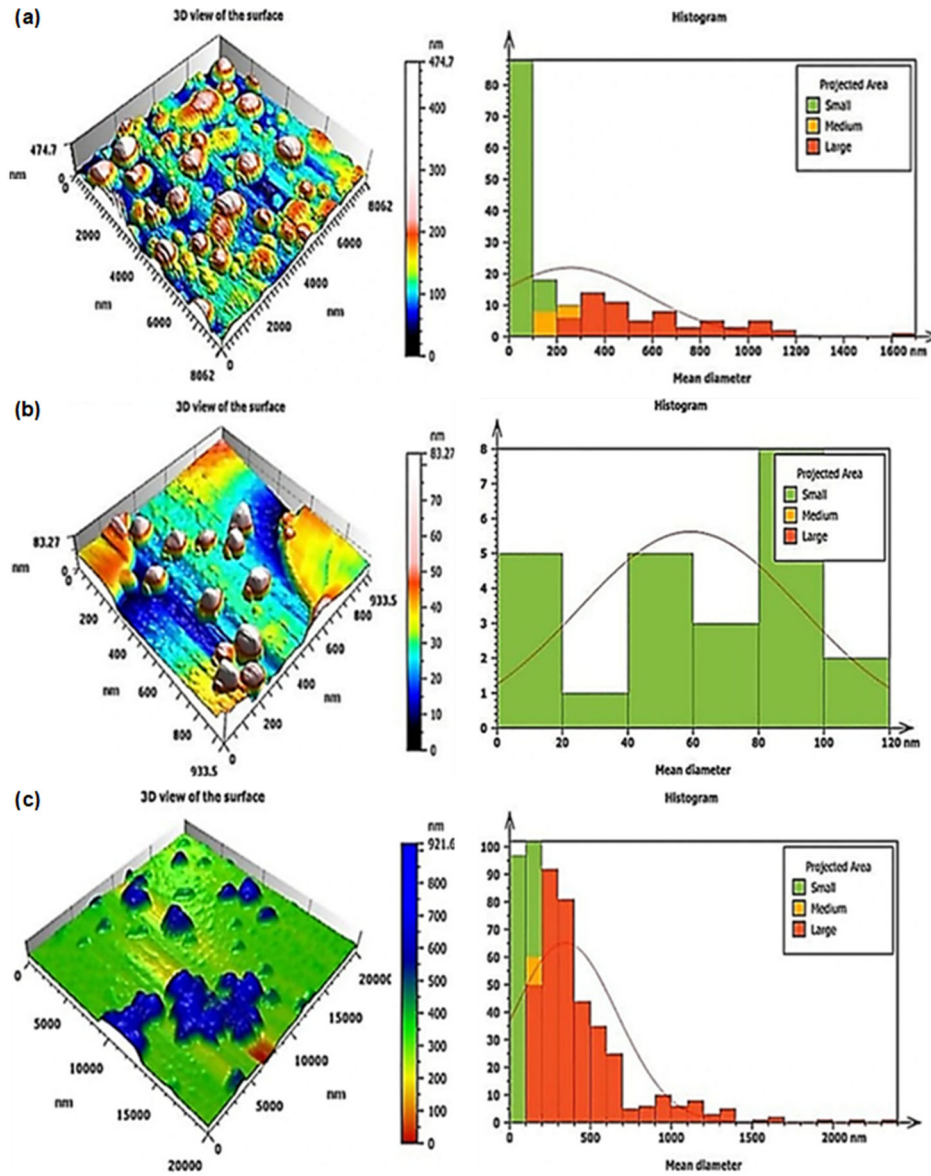


Fig S1. AFM image and granulometry cumulating distribution chart of (a) BT, (b) MT, and (c) Ca-M clay samples

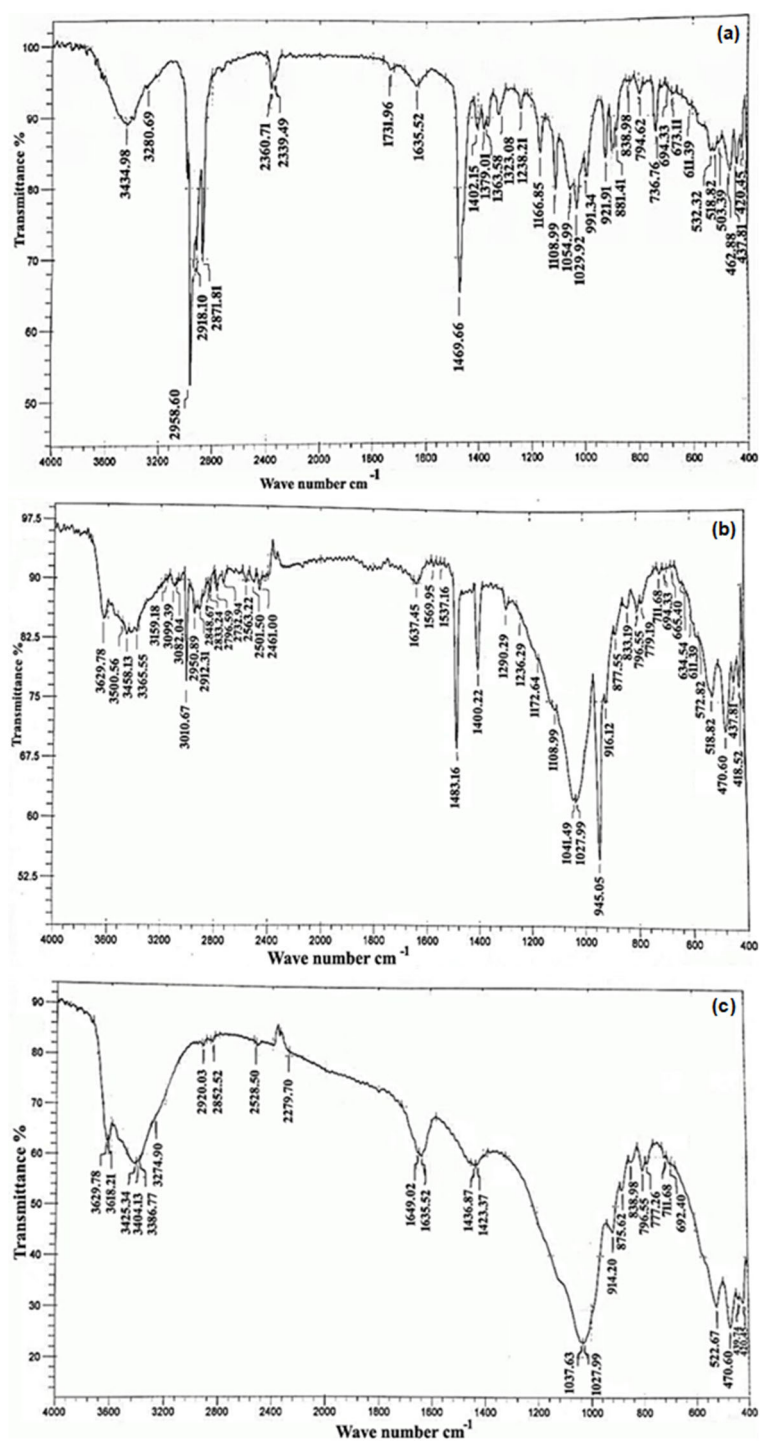


Fig S2. FTIR spectra of (a) BT, (b) MT, and (c) Ca-M clay samples

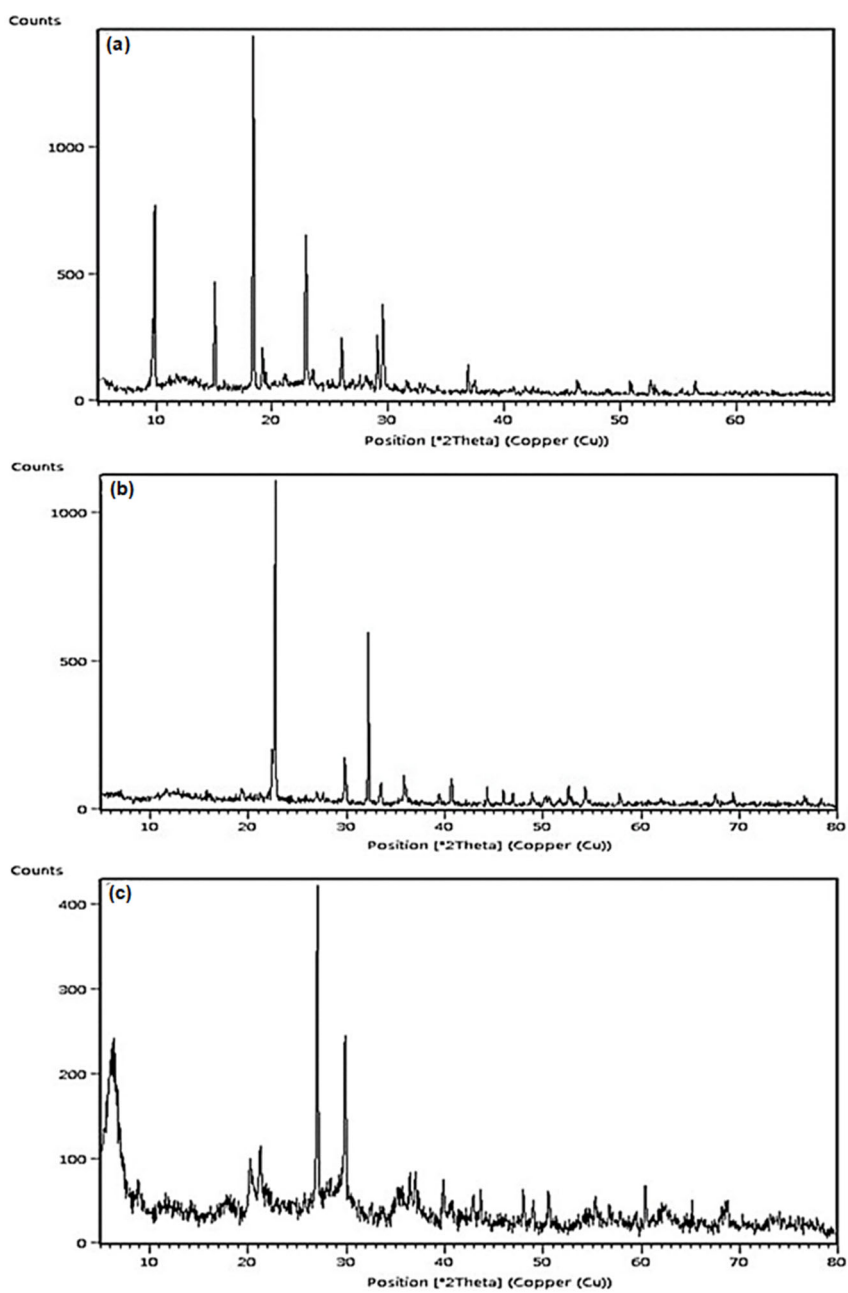


Fig S3. XRD spectra of (a) BT, (b) MT, and (c) Ca-M clay samples