

# HASIL ANALISIS

## Preparasi sampel:

Sebanyak 5 mg dalam 1 mL metanol dengan membran PTFE 0.2 µm.

## Metode yang digunakan

### Targeted

LC MS : UHPLC Vanquish Tandem Q Exactive Plus Orbitrap HRMS ThermoScientific  
Kolom : Accucore C18, 100 x 2.1 mm, 1.5 µm (ThermoScientific)  
Laju Alir : 0.2 ml/min  
Eluen : H<sub>2</sub>O + 0.1% asam format (A) dan asetonitril+ 0.1 % asam format(B)  
Gradien : 0-1 menit (5% B), 1-16 menit (5-95% B), 16-18 menit (95%B), 18.01-25 menit (5%B)  
Suhu kolom : 30 °C  
Volume Injeksi : 5 µl  
Mass range : 100-1500 m/z.  
Mode ionisasi : positif

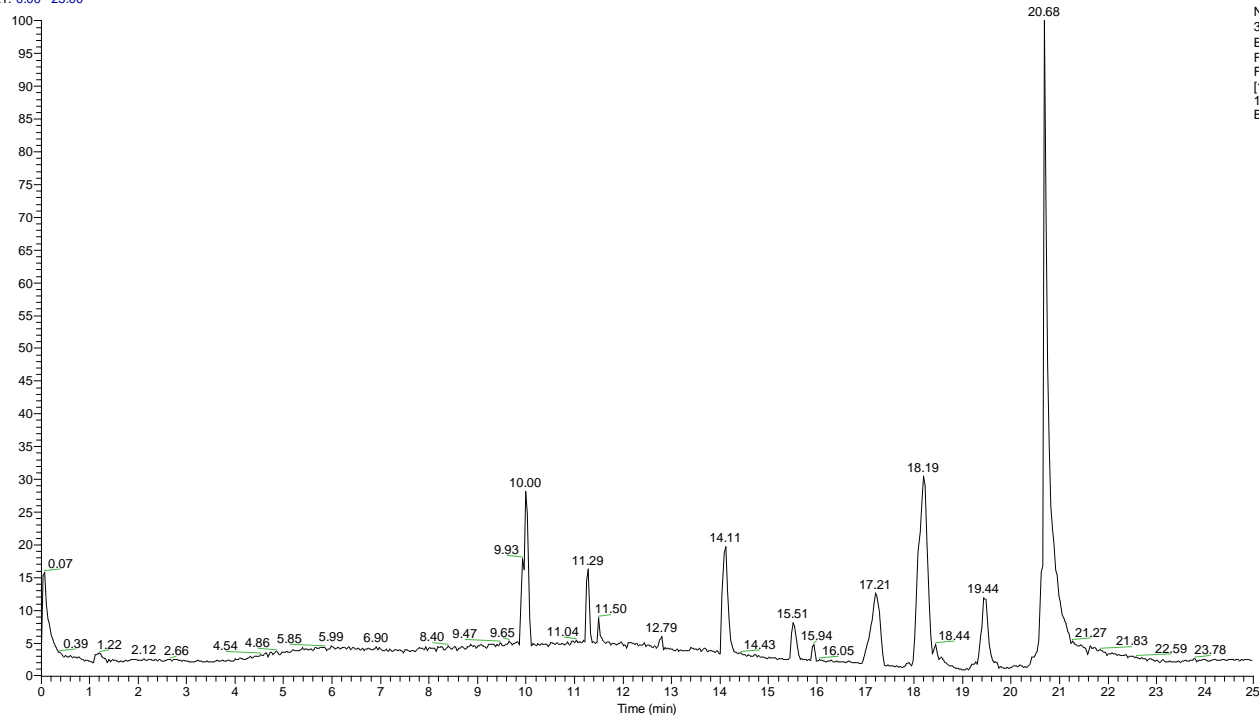
Full MS	
Resolution	70,000
AGC target	3e6
Maximum IT	100 ms
Scan range	100 to 1500 m/z
dd-MS <sup>2</sup> / dd-SIM	
Resolution	17,500
AGC target	1e5
Maximum IT	50 ms
Loop count	5
TopN	5
Isolation window	4.0 m/z
Fixed first mass	—
(N)CE / stepped (N)CE nce	18, 35, 53
dd Settings	
Minimum AGC target	8.00e3
Intensity threshold	1.6e5
Apex trigger	—
Charge exclusion	—
Peptide match	preferred
Exclude isotopes	on
Dynamic exclusion	10.0 s

HESI source		actual
Sheath gas flow rate	15	0
Aux gas flow rate	3	0
Sweep gas flow rate	0	0
Spray voltage (  kV  )	3.80	0.00
Spray current (µA)		0.10
Capillary temp. (°C)	320	320
S-lens RF level	50.0	
Aux gas heater temp (°C)	0	39

# HASIL ANALISIS

## Blanko

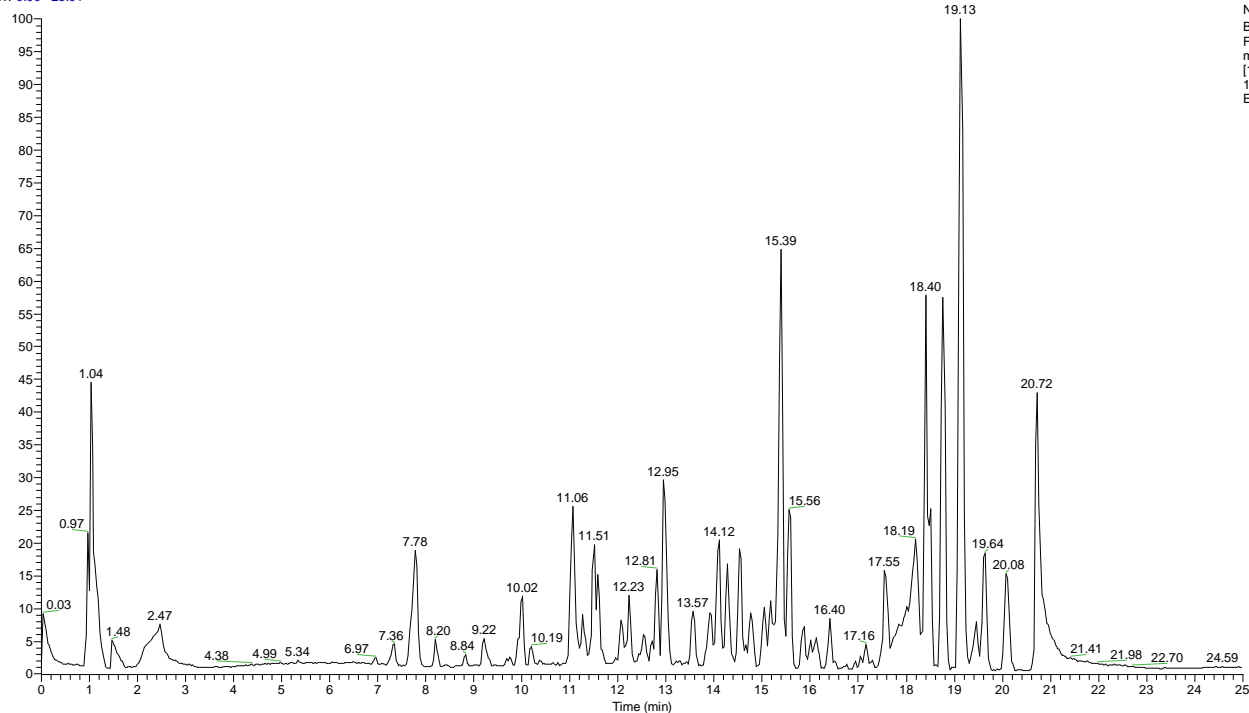
RT: 0.00 - 25.00



NL: 3.23E8  
Base Peak F:  
FTMS + p ESI  
Full ms  
[100.0000-  
1500.0000] MS  
Blanko

## Sampel Ekstrak Aseton

RT: 0.00 - 25.01

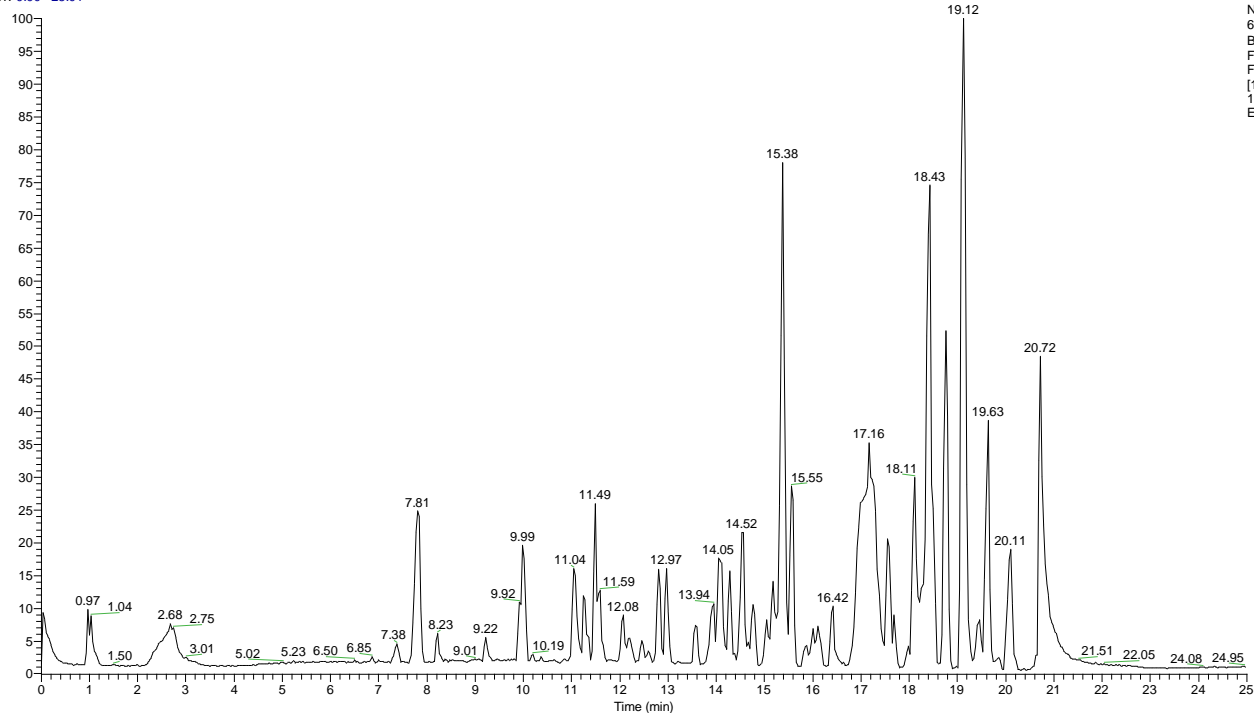


NL: 6.32E8  
Base Peak F:  
FTMS + p ESI Full  
ms  
[100.0000-  
1500.0000] MS  
Ekstrakaseton

# HASIL ANALISIS

## Sampel Ekstrak DCM

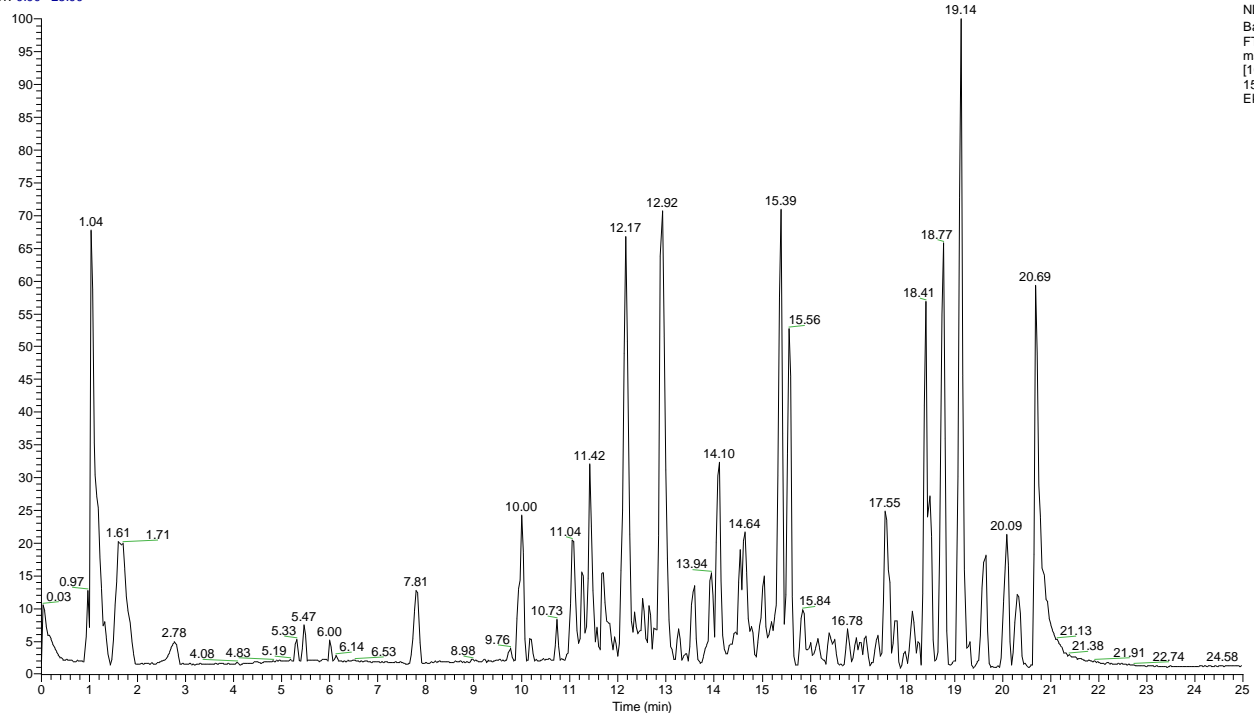
RT: 0.00 - 25.01



NL: 6.08E8  
Base Peak F:  
FTMS + p ESI  
Full ms  
[100.0000-  
1500.0000] MS  
EkstrakDCM

## Sampel Ekstrak Etanol

RT: 0.00 - 25.00



NL: 5.13E8  
Base Peak F:  
FTMS + p ESI Full  
ms  
[100.0000-  
1500.0000] MS  
Ekstraketanol