

Identification of Groundwater Potential Zones Using Remote Sensing and GIS Technique: A Case Study of the Ketungau Basin in Sintang, West Kalimantan

*Ajun Purwanto¹, Paiman², Eviliyanto³, Dony Andrasgoro⁴, Rustam⁵

^{1,2,3,4}Department of Geography Education IKIP PGRI Pontianak, West Kalimantan, Indonesia.

⁵Department of Counseling Guidance Education IKIP PGRI Pontianak, West Kalimantan, Indonesia.

Received: 2022-10-25

Revised: 2023-02-03

Accepted: 2023-03-10

Keywords: Identification;
Groundwater Potential
Zones; Remote Sensing;
GIS; Ketungau Basin

Correspondent email:

ajunpurwanto@
ikipgripta.ac.id

Abstract. Groundwater is one of the most valuable natural resources in Sintang, but essential basic information regarding its properties and characteristics is presently unavailable. Currently, systemic and uniform investigations, as well as groundwater potential zones mapping are yet to be conducted within the framework of basin area units to support development activities. Therefore, this study aims to identify and map groundwater potential zones using remote sensing and GIS. The employed data were obtained from drainage density, slope steepness, straightness density, total rainfall, lithology, soil type, and land use land cover. The method applied was an interpretation of secondary data, which included a) identification and evaluation of criteria, b) data collection, c) preprocessing, and e) reclassification, while the analysis technique used was a weighted overlay. The results showed that the study location has five classes of groundwater potential zones, namely highly potential, potential, moderate, non-potential, and highly non-potential with areas of 120,754.08 ha (20.62%), 220,693.71 ha (37.69%), 109,668.44 ha (18.73%), 93,404.38 ha (15.95%), and 41,068.31 ha (7.01%), respectively. Highly potential and groundwater potential zones were identified in the central, eastern, and western parts of the Ketungau basin. In contrast, the dominant non-potential and highly non-potential zones were found along the northern basin boundary. Based on the results, remote sensing and GIS approaches are practical tools for identifying groundwater potential zones, which can be used to determine policies related to groundwater utilization.

©2022 by the authors Indonesian Journal of Geography

This article is an open access article distributed under the terms and conditions of the Creative Commons Attribution (CC BY NC) license <https://creativecommons.org/licenses/by-nc/4.0/>.

1. Introduction

One of the most valuable natural resources is groundwater, which supports human health, economic development, and ecological diversity. Also, it plays a role in determining the socioeconomic status of all nations (Yıldırım, 2021) and supplies the water needed by communities in both urban and rural areas of developed as well as developing countries. Groundwater provides half of the water used for domestic purposes by the global population. Additionally, approximately 25% of all water is withdrawn to serve 38% of the world's irrigated land. This natural resource is often poorly understood, undervalued, mismanaged, and even abused despite having enormous importance. Due to the escalating climate change threat to water supplies recently, the significance of groundwater has increased (Aykut, 2021). As water scarcity in many parts of the world rises, groundwater's vast potential and careful management must be considered (Water, 2022).

Surface water bodies such as rivers and ponds can act as recharge zones (Waikar & Nilawar, 2014). Moreover, excessive water withdrawal from aquifers would cause environmental and economic damage to the regions explored (De Stefano & Lopez-Gunn, 2012; Yıldırım, 2021). Overuse of groundwater has led to its depletion in many parts of the world (Sresto et al., 2021). To maintain sustainability, there is a need to

identify groundwater potential zones and focus on convenient management. The conservation process must be carried out because groundwater is considered the primary alternative viable resource in these environments (Israil et al., 2006; Razandi et al., 2015; Yıldırım, 2021).

Determination of groundwater potential zones conventionally through drilling, geophysical, and hydrogeological technique is expensive due to the requirement of much time, budget, and specialized knowledge (Israil et al., 2006; Jha et al., 2010; Sresto et al., 2021). The delineation of the zones has become more accessible and effortless with geospatial methods, which have been widely applied recently (Allafta et al., 2021; Murmu et al., 2019; Nampak et al., 2014; E. Şener et al., 2018).

To reduce costs and risks, there is a need to use methods and technologies, including Geographic Information Systems (GIS) and remote sensing, that can accurately detect potential source zones. (Achu et al., 2020; Allafta et al., 2021; Lentswe & Molwalefhe, 2020; Mallick et al., 2019; Murmu et al., 2019; E. Şener et al., 2018; Yıldırım, 2021). GIS is capable of defining groundwater zones by providing a distinct working environment for the efficient processing and storing of georeferenced data compiled from various sources such as satellite imagery, maps, and soil surveys (Lillesand et al., 2015).

The application of remote sensing in hydrogeological investigation and monitoring tends to generate important information on spatial and temporal scales, essential for analyzing, predicting, and effectively validating water resource models (Allafta et al., 2020). The ability of satellite imagery to cover a large spatial scale is crucial for depicting basin physiographic characteristics, such as land use or cover, slope, drainage density, and structural features, including rock straightness, fractures, and faults (Kuria et al., 2012).

GIS is a vital technology for the sustainable development of environmental management (Kadam et al., 2017; Maheswaran et al., 2016; Rajasekhar et al., 2019). GIS analysis for identifying groundwater potential zones can provide decision-makers with clear information, to facilitate more accurate and quicker choices during the decision phase.

Furthermore, remote sensing is a source of information on surface features relevant to groundwater resource management (Rajasekhar et al., 2017; Rajasekhar, Raju, et al., 2018; Rajasekhar, Sudarsana Raju, et al., 2018; Rajaveni et al., 2017; Shailaja et al., 2019). The use of remote sensing and GIS to investigate groundwater potential zones has extremely increased in recent decades (Allafta et al., 2020; Awawdeh et al., 2014; Mukherjee et al., 2012; Swetha et al., 2017; Yeh et al., 2016). This is attributed to their ability to rapidly, precisely, and cost-effectively investigate surface and subsurface water over large areas. Therefore, this study aims to identify and map the distribution of groundwater potential zones with remote sensing and GIS.

2. The Methods

Study Location

The study location is in the Ketungau Basin, Sintang Regency, West Kalimantan Province, which covers three regions, namely Ketungau Hulu, Tengah, and Downstream, with a total area of 585.584,92 ha. Furthermore, its

characteristics include a range of drainage density from sparse to very dense and slope steepness from gentle to very steep. The Land Use Land Cover (LULC) comprises primary dryland forest, secondary dryland forest, secondary swamp forest, industrial forest, plantations, settlements, mining areas, and dryland agriculture mixed with shrubs, swamps, shrubs, vacant land, and water bodies. The straightness density varies from very to rare, and the soils are composed of dusty loam inceptisols, loamy ultisols, sandy loam histosols with crumb structures, and loamy oxyisols.

Astronomically, the Ketungau basin presented in Figure 1 is located at 110° 53' 0"–111° 55' 0" E and 0° 9' 30"–1° 11' 30" N. Administratively, it is bordered to the north, east, south, and west by Malaysia, Kapuas Hulu Regency, Sintang District, and Sanggau Regency, respectively.

Methodology

This study employed the secondary data interpretation method, and the data can be seen in **Table 1**. GIS and remote sensing technique were used to delineate groundwater potential zones of the Ketungau Basin. Furthermore, the applied methodology included six stages, namely a) criteria identification and evaluation, b) data collection, c) preprocessing, d) input dataset preparation, e) reclassification of input layers and f) conduction of a weight sum overlay analysis using ArcGIS tools and ranking of the final value. Figure 2 presents the sequence of the methodology (Rajasekhar, Raju, et al., 2018) with modifications.

Data

This study used seven parameters which are described as follows:

- Drainage Density is the total length of all streams or rivers per unit drainage area (Etikala et al., 2019; Guru et al., 2017). This denotes the closeness of stream segments

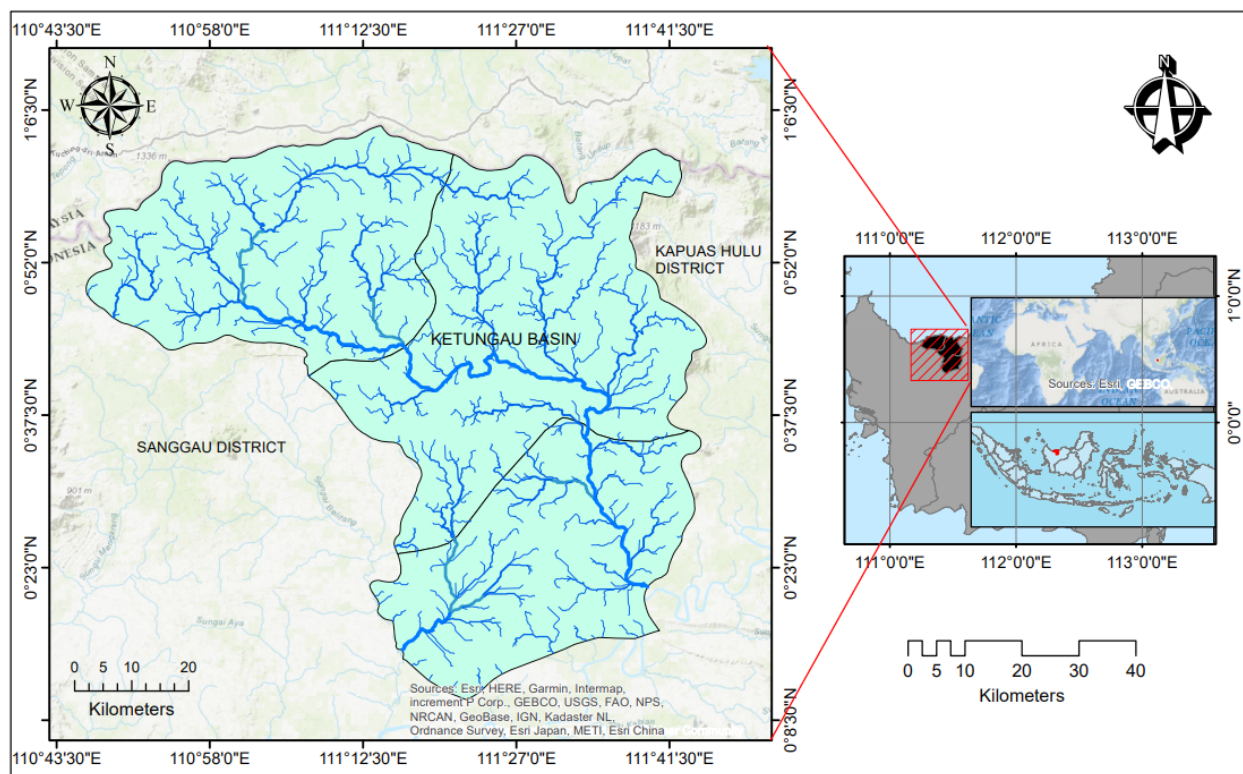


Figure 1. Study Location

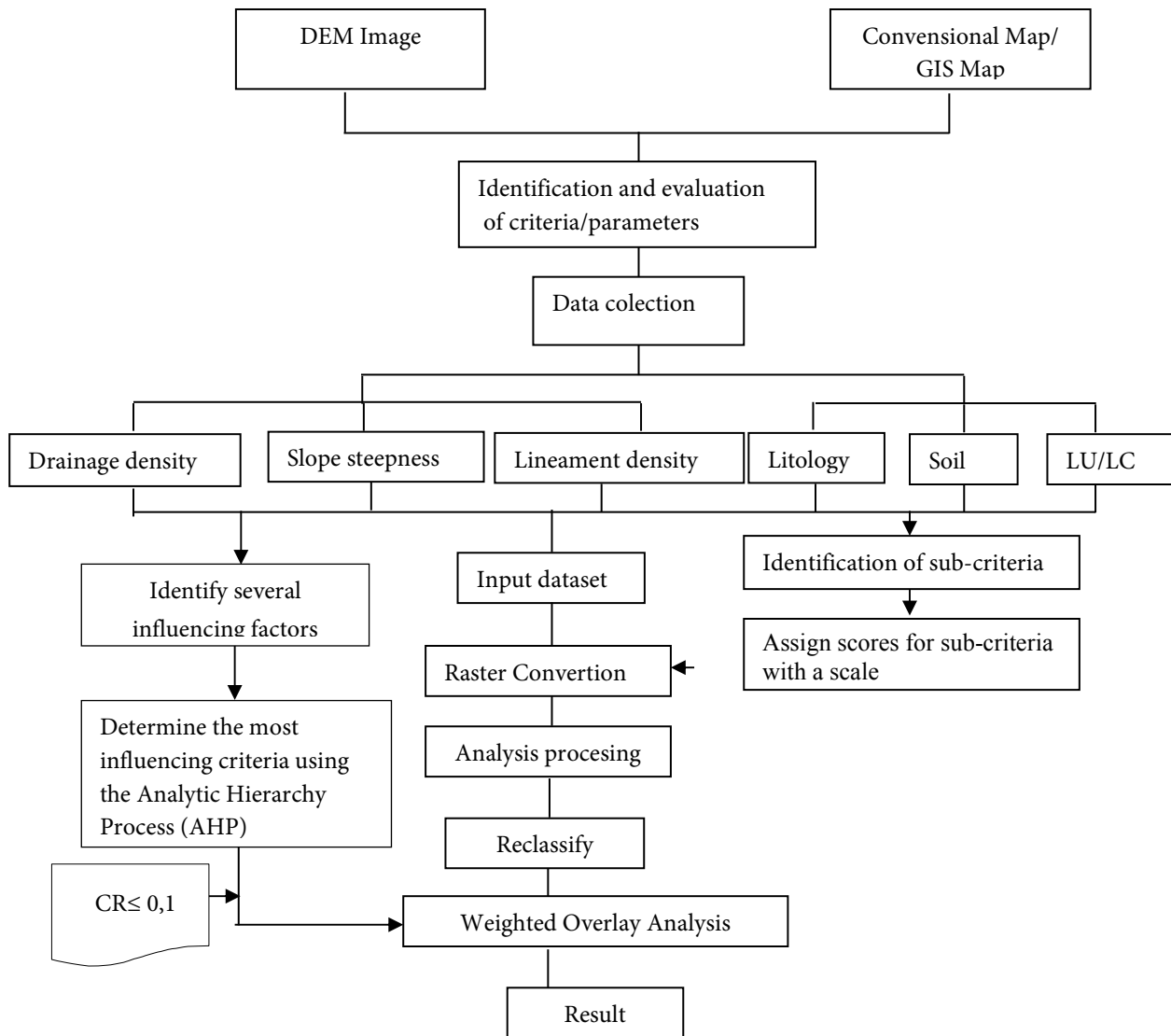


Figure 2. Study Methodology

- spatially and affects the infiltration and permeability of a drainage basin, with correlation to the hydrograph's shape. It also provides information on the characteristics of rock, soil permeability, water infiltration, and surface runoff (Burayu, 2022; Etikala et al., 2019). Drainage density plays a role in groundwater potential zones of a place (Guduru & Jilo, 2022). High drainage densities in any area ensure less infiltration compared to low densities, as much of the water becomes runoff. Conversely, areas with low drainage density allow more infiltration, leading to recharge by groundwater system (Burayu, 2022; Etikala et al., 2019; Fashae et al., 2014; Saranya & Saravanan, 2020).
- b. Slope steepness, the study location's slope map generated from DEM data using the spatial analysis tool in ArcGIS 10.8 was divided into five classes, including flat, gentle, moderate, high, and steep. Generally, steep slopes are characterized by lower weights, while gentle slopes contain higher weights (Agarwal & Garg, 2016). High-slope regions have high runoff and low infiltration rates that are unsuitable for groundwater recharge as water lacks the sufficient time needed to infiltrate the ground. In gentle slopes, the movement of water is slow, which allows more infiltration. On steep slopes, runoff is significantly faster with lower infiltration (Fashae et al., 2014; Sajil Kumar et al., 2022).
 - c. Lineament are the simple and complex linear properties of geological structures such as faults, cleavages, fractures, and various surfaces of discontinuities (terraces and ridges). These are arranged in straight lines or slight curves identified by remote sensing (Kindie et al., 2018; O'leary et al., 1976). Lineament were generated from a geology map and DEM using ArcGIS 10.8 with a line density spatial tool. Areas with high lineament density are considered suitable for groundwater potential zones (Guru et al., 2017; Naghibi et al., 2016; Pinto et al., 2017; Rahmati et al., 2016; Sedrette & Rebai, 2016).
 - d. Lithology encompassing rock properties, plays an essential role in the distribution and presence of groundwater. This can provide insights into the incidence, movement, and storage of groundwater (Achu et al., 2020; Dhinsa et al., 2022) and determine the nature of porosity and permeability (Burayu, 2022).
 - e. Soil is one of the essential factors for delineating groundwater potential zones in study locations due to its ability to control infiltration, percolation, and permeability rates (Burayu, 2022; Kindie et al., 2018; Terzer et al., 2013; Thannoun, 2013; Thapa et al., 2017). Additionally, grain size and types influence the control of these rates (Arun Kumar et al., 2021; Sajil Kumar et al., 2022).

f. LULC is crucial in determining the soil's water-holding capacity and groundwater recharge and discharge (Burayu, 2022; Kindie et al., 2018; Roy & Sahu, 2015). Land cover significantly affects hydrological processes, namely interception, soil infiltration capacity, and runoff (Kindie et al., 2018). Furthermore, forest areas have a high potential for groundwater recharge compared to mining and bare land areas. Since land use primarily controls groundwater recharge, its proper understanding is necessary for sustainable groundwater development (Sajil Kumar et al., 2022). Forests assist in holding runoff because the leaves and trees slow down rainfall before hitting the ground, providing more time for plant roots to infiltrate and join groundwater system. The data and sources used in this study are presented in **Table 1**.

Analysis

In this study, spatial analysis was conducted by superimposing all thematic maps through the weighted overlay methods after assigning rates for different classes in each layer and weights for thematic layers using the ArcGIS 10.8 tool (Abiy et al., 2016; Kindie et al., 2018; Moisa et al., 2022; Tamiru

& Wagari, 2021). Parameters related to groundwater potential zones can be seen in the data description. The identified potential zones of groundwater basin were validated with Analytical Hierarchy Process (AHP).

The AHP involved evaluating each factor within a particular cluster simultaneously based on its relative importance, as presented in **Table 2**. AHP technique with normalized weights for thematic layers were selected carefully to guide decision-making during input layers evaluation for delineating groundwater zones using the ArcGIS software.

A pairwise comparison matrix was formed, where $a_{ii} = 1$ and $a_{ij} = 1/a_{ji}$, for the determination of weights assigned to different thematic maps and their features based on field experience and expert judgment. This was normalized with the AHP Saaty method (Duguma & Duguma, 2022; Goepel, 2013; A. Kumar & Krishna, 2018) as shown in **Table 3**.

The weight factors for the ranking criteria and resulting sub-criteria were calculated using the right eigenvectors, which were derived from the maximum absolute eigenvalues (λ_{max}). Meanwhile, the principal eigenvalue (λ) was estimated with the eigenvector technique (Duguma & Duguma, 2022; A. Kumar & Krishna, 2018),

Table 1. Data Sources

Groundwater Parameters	Data Source	Software for processing
Drainage density	ALOS PALSAR Image of 10m resolution	
Slope steepness	ALOS PALSAR Image of 10m resolution	
Soil Type	West Kalimantan Soil Type Map, 1:100.000 scale	ArcGIS 10.8
Lithology	West Kalimantan Geology Map, 1:100.000 scale	
Land Use Land Cover	From ESRI's 2020 land use land cover image	
Drainage Density	ALOS PALSAR Image of 10m resolution	PCI Geomatica

Table 2. Pairwise Comparison Matrix

Parameters	Ld	Lith	DD	Slope	Soil	LULC
Ld	5	0.5	0.33	0.25	0.2	0.2
Lith	10	1	0.66	0.5	0.4	0.4
DD	15	2.5	1	0.75	0.6	0.6
Slope	20	2	1.33	1	0.8	0.8
Soil	25	5	2.5	1.66	1	1
LULC	25	5	2.5	1.66	1	1
Sum	100	16	8.32	5.82	4	4

Table 3. Normalized Pairwise Comparison Matrix

Parameters	Ld	Lith	DD	Slope	Soil	LULC	Priority	Eigenvalue	Weight (%)
Ld	0.05	0.03125	0.039663	0.042955	0.05	0.05	0.043	4.397	5
Lith	0.1	0.0625	0.079327	0.085911	0.1	0.1	0.087	1.407	10
DD	0.15	0.15625	0.120192	0.128866	0.15	0.15	0.142	1.186	15
Slope	0.2	0.125	0.159856	0.171821	0.2	0.2	0.176	1.024	20
Soil	0.25	0.3125	0.300481	0.285223	0.25	0.25	0.274	1.098	25
LULC	0.25	0.3125	0.300481	0.285223	0.25	0.25	0.274	1.098	25
Sum	1	1	1	1	1	1	1	10.213	100

$$\lambda_{max} = 10,213, CI = -0.297712816, RCI_6 = 1.24, \text{ and } CR = -0.24009098 \leq 0.1.$$

$$\lambda_{max} = \sum_{wi} \frac{1}{n} \frac{(AW)i}{wi}$$

$$\begin{bmatrix} a_{11} & a_{12} & \dots & \dots & a_{1n} \\ a_{21} & a_{22} & \dots & \dots & a_{2n} \\ \dots & \dots & \dots & \dots & \dots \\ a_{n1} & a_{n2} & \dots & \dots & a_{nn} \end{bmatrix} \begin{bmatrix} w_1 \\ w_2 \\ \dots \\ w_n \end{bmatrix} \dots \dots \dots (1)$$

where W is the corresponding eigenvector of λmax, wi (i = 1, 2, ..., n) is the weight value for ranking, and in this study, λmax = 10.214. The consistency of the decision matrix must be evaluated by calculating the consistency index (CI) (Duguma & Duguma, 2022; Goepel, 2013; Ş. Şener et al., 2011), which is defined as:

$$CI = \frac{\lambda_{maks} - n}{n - 1} \dots \dots \dots (2)$$

where CI is the consistency index, λmax is the maximum or principal eigenvalue of the scoring matrix which can be easily calculated from the matrix, and n is the matrix order (Duguma & Duguma, 2022; Goepel, 2013; Ş. Şener et al., 2011). The coefficient of consistency ratio (CR) is evaluated using equation (3).

$$CR = \frac{CI}{RCI} \dots \dots \dots (3)$$

where RCI is the random consistency index, its value is obtained from a Saaty scale of 1–9. Also, the CR value must be less than 0.1, indicating the overall compactness of the pairwise comparison matrix (Duguma & Duguma, 2022; Goepel, 2013; Ş. Şener et al., 2011) for consistent weights. In case CR exceeds 0.1, the weights should be double-checked to ensure accuracy and avoid inconsistencies. The weight of each parameter is presented in **Table 4**.

Table 4. Score and Weight of Each Groundwater Potential Zones Parameter

Parameters of Groundwater Potential Zones	Classification	Score	Weight
Drainage Density (Km/Km2)	0-38.00	1	15
	38.00-77.09	2	
	77.09-120.53	3	
	120.53-170.48	4	
	170.48-276.89	5	
Slope	>45	1	20
	25-45	2	
	15-25	3	
	8-15	4	
	0-8	5	
Liniemant Density (Km/Km2)	0-0.077	5	5
	0.077-0.236	4	
	0.236-0.451	3	
	0.451-0.753	2	
	0.753-1.306	1	
Lithology	Igneous rock	1	10
	Green Skis	2	
	Sandstone	3	
	Alluvium	4	
Soil Type	Ultisol	1	25
	Inceptisol	2	
	Histosol	3	
	Oxisol	1	
LULC	Bare land, mining areas	1	25
	Shrubs, swamp	2	
	Dryland farming	3	
	Plantation, settlement, and transmigration areas	4	
	Secondary dryland forest, and secondary swamp forest	5	
	Dryland forest	6	
	Primary industrial forest, waterbody	7	

3. Result and Discussion

Drainage Density

Drainage density is influenced by topographical conditions and geological permeability (Gao et al., 2022). Areas containing a flat slope usually have high to very high permeability with very low drainage density. The drainage density was generated from Digital Elevation Model (DEM) using the line density tool in ArcGIS 10.8. The density level is very poor, with the majority located at the sub-watershed boundary. The Upper Ketungau area is predominantly located in the center, while the Lower Ketungau is found in several places. The areas at the foot of the slopes exhibit poor density levels, but high to very high-density levels are mostly scattered near the main river.

Drainage density increases with increasing altitude in areas with a flat surface but decreases rapidly with increasing altitude on a steep mountainous surface. It is an inverse function of permeability and an essential parameter in assessing groundwater potential zones. Moreover, *flow density* is a crucial morphometric indicator that can provide further information on the response of a watershed to runoff processes. Supposing the runoff is high, both infiltrated water potential and reserves for groundwater will become low. Once the runoff is low, infiltration and groundwater potential zones tend to be high (Ajay Kumar et al., 2020; Harini et al., 2018). The drainage density of the study location is presented in **Figure 2**.

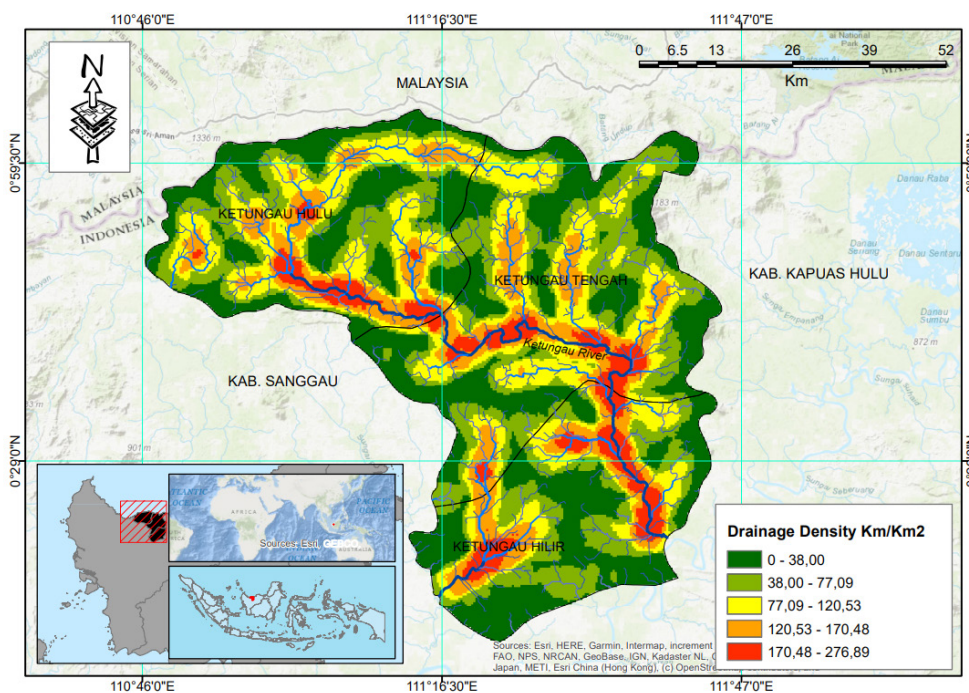


Figure 2. Drainage Density of Ketungau Basin

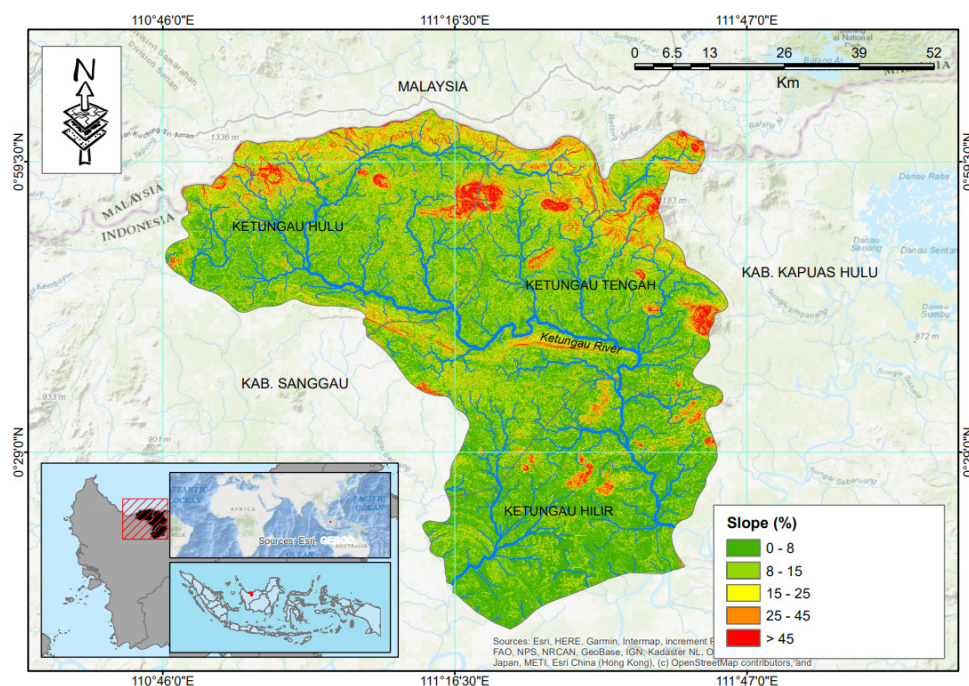


Figure 3. Ketungau Basin Slope

Slope

The slope refers to the steepness or the change in elevation between two locations, and it directly impacts groundwater recharge. This is also described as the variation in elevation across a particular area, which influences the movement of water runoff (Naghbi et al., 2016; Duguma & Duguma, 2022; Harini et al., 2018; Kattimani et al., 2018; Rafati & Nikeghbal, 2017).

The slope is an essential parameter in groundwater investigations because infiltration is inversely proportional to soil steepness. Normally, a steeper slope leads to lower velocities of surface water flow and greater infiltration into the soil. Conversely, a less steep slope increases surface runoff and decreases groundwater percolation (Duguma & Duguma, 2022).

The slope in the study location varies from 0 to >45 % and is dominated by low values of 0-3% and 3-8%, as presented in **Figure 3**. The high-sloped areas are predominantly situated on the north side, parts of the west, and the central region. The western side is hilly, with watershed edges and a less comprehensive distribution of large slopes compared to the north. Steep areas are scattered across Central and Lower Ketungau, while places with a low slope are found mainly in the central and southern parts of Upper, Middle, and Lower Ketungau.

Lineament Density

Lineament are linear and curved features caused by tectonic forces, which can be easily observed on satellite images (Duguma & Duguma, 2022; T. Kumar et al., 2014) and are capable of indicating main joints, fractures, and faults. These also provide insights into the linearity and topography of formations, vegetation cover, infrastructure such as roads and bridges, straight stream valleys, and boundaries between different lithology units (K. G. Berhanu & Hatiye, 2020). High lineament density supports groundwater potential zones compared to less lineament density (Duguma & Duguma, 2022).

The excessive density of lineament lengths is an indication of huge secondary porosity that represents sectors with high groundwater potential zones (Al-Abadi & Al-Shamma'a, 2014) and permeability (Yeh et al., 2016). *Alignment density* as an important geological formation affects groundwater potential zones and recharge. Areas with higher alignment density permit better infiltration and groundwater absorption (Kabeto et al., 2022), leading to their suitability for the development of groundwater potential.

According to the delineation results, the northern slope and the southern tip of the basin have the highest lineament density. The characteristic straight line on the north is solid but short, while on the south side, it is relatively narrow and short. Lineament in the middle has a different character, where the straightness is tenuous and longer compared to the north and south sides. Analysis indicated that groundwater potential zones is high in areas with great lineament density. Groundwater exploitation can be considered in several places with high lineament density structures. Lineament density in the study location is presented in **Figure 4**.

Lithology

The sedimentary rocks in the study location are alluvium, siltstone, mudstone, sand, gravel, and plant remains. The metamorphic consists of greenschist and amphibolite, while the igneous comprises dolerite, diorite, basalt, andesite, tuff, and breccia. Sedimentary rocks are porous because the bonds between the grains are tenuous, while metamorphic rocks have porosity due to the cracks contained. Porosity and permeability are the high-sensitivity variables that influence the availability of groundwater potential zones within the area. Porosity decides the amount of water that can be absorbed, and permeability determines the ease of extracting water for use (Dhinsa et al., 2022). This phenomenon occurs because of the intense pressure force that causes metamorphic rocks to form and fracture. As for igneous rocks, only a few have porosity because of their massive structure.

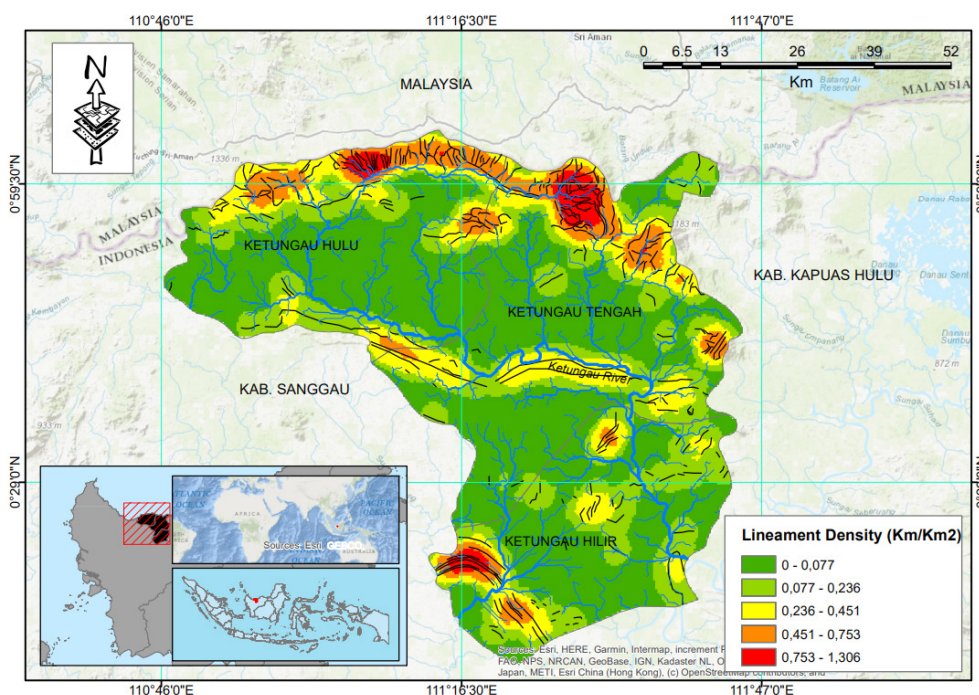


Figure 4. Ketungau Basin Lineament Density

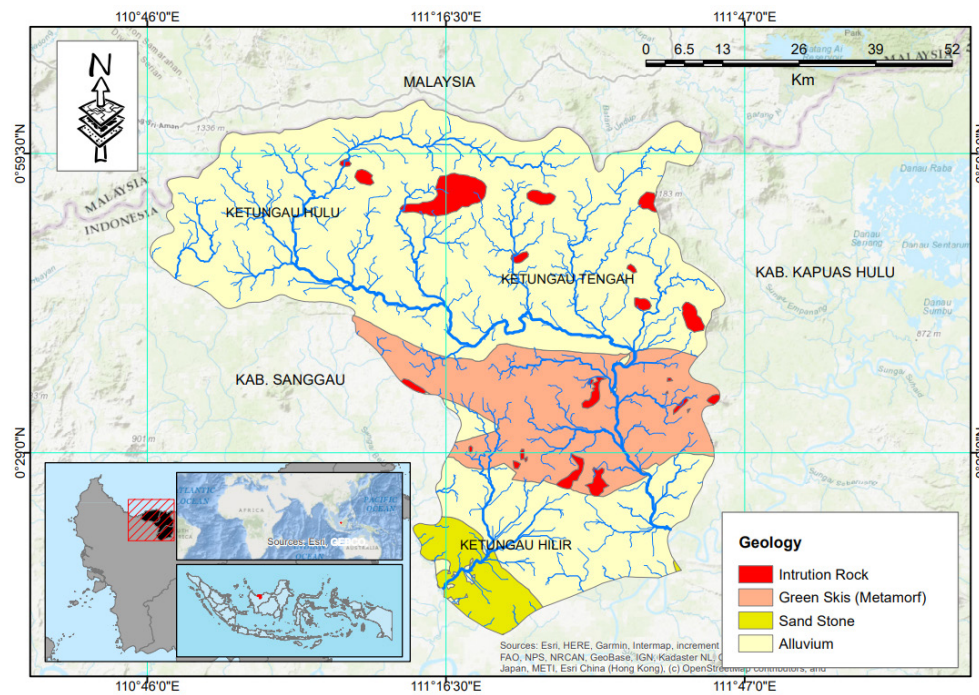


Figure 5. Ketungau Basin Lithology

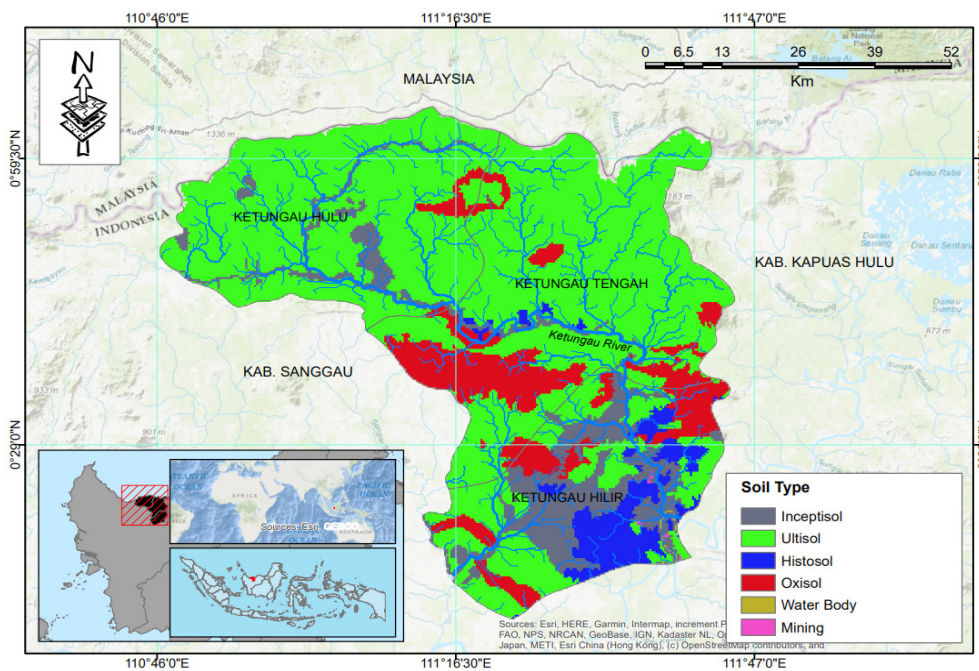


Figure 6. Ketungau Basin Soil Type

During the Eocene to Oligocene period, the Ketungau Basin experienced a high level of clastic sediment supply, leading to the deposition of fluvial conglomerate units. This was caused by the basin subsidence due to sediment infill at the boundary between the linear granite zones and the schist in the north (Semitau Tinggi). Such a high level of clastic sediment supply is commonly observed in well-developed basins (Hall & Nichols, 2002; Smith *et al.*, 1990).

The Ketungau Formation is 900 m thick, consisting of claystone, shale, silt, fine sandstone, and a thin layer of coal at the top (Santy & Panggabean, 2013; Teichmüller & Teichmüller, 1982). Claystone layers usually contain fine silt or sand, which can become good aquifers for hydrogeological purposes. Therefore, groundwater potential zones in the Ketungau basin is significant when considering the geology of

its constituents. The lithology of the Ketungau Basin Lithology is presented in **Figure 5**.

Soil Type

Various soil types covering the Ketungau Basin include inceptisol, ultisol, histosol, and oxisol, which are respectively characterized by dusty loam, loam, sandy loam with a crumb structure, and loam textures. Loams and sandy loams possess a better infiltration capacity and groundwater potential zones than clays (Duguma & Duguma, 2022). According to a study conducted by the University of Addis Ababa, soils with good textures such as loam, clay loam, and sandy loam have good infiltration capacity and groundwater potential zones (B. Berhanu *et al.*, 2013).

Ultisol is the dominant soil covering 74.06% of the study location and scattered in the northern and central regions. Oxysol has an area of 10.67% spread over the central and western parts. Inceptisols and histosols are primarily distributed across the south with an area of 9.28% and 5.99%, respectively. The soil types of the Ketungau Basin soil can be seen in **Figure 6**.

Land Use Land Cover (LULC)

There are 13 land uses in the study location, namely primary dryland forest, secondary dryland forest, secondary swamp forest, industrial forest, plantations, settlements, mining areas, dryland agriculture mixed with shrubs, shrubs, swamps, deforested land, transmigration areas, and water bodies.

The distribution of primary and secondary dry forests lies in the northern part of the study location. Secondary swamp forest is mainly scattered on both sides of the main river and in the south. Industrial plantation forests are found in the Upper, Middle, and Lower parts. Most of the plantation area is in the south, with settlements on the river's right and left. Mining areas and former mines are scattered along the main river and on the southern side. Agricultural land use in wetlands mixed with shrubs is spread across the southernmost tip of the study location, while bushes are scattered on the south side, specifically in Ketungau Hilir. Most of the open land is in the north, namely in Upper Ketungau, while the transmigration areas are in Ketungau Hilir. The area of each land use is presented in **Table 5**.

Table 5. The area of Land Use Land Cover Ketungau Basin

Land Use Land Cover	Area (ha)	%
Primary dryland forest	29,444.23	5.03
Secondary dryland forest	88,535.48	15.12
Secondary swamp forest	34,548.54	5.90
Industrial forest	10,372.4	1.77
Plantation	26,352.31	4.50
Settlement	1.98,62	0.03
Mining areas	34.97,45	0.60
Dryland farming mixed shrubs	338,963.08	57.88
Shrubs	23,174.2	3.96
Swamp	11,399.56	1.95
Bare land	14,344.06	2.45
Transmigration areas	44.01	0.01
Waterbody	4,710.98	0.80
Total Area	585,584.92	100.00

Land use land cover in Ketungau Basin can be seen in **Figure 7**.

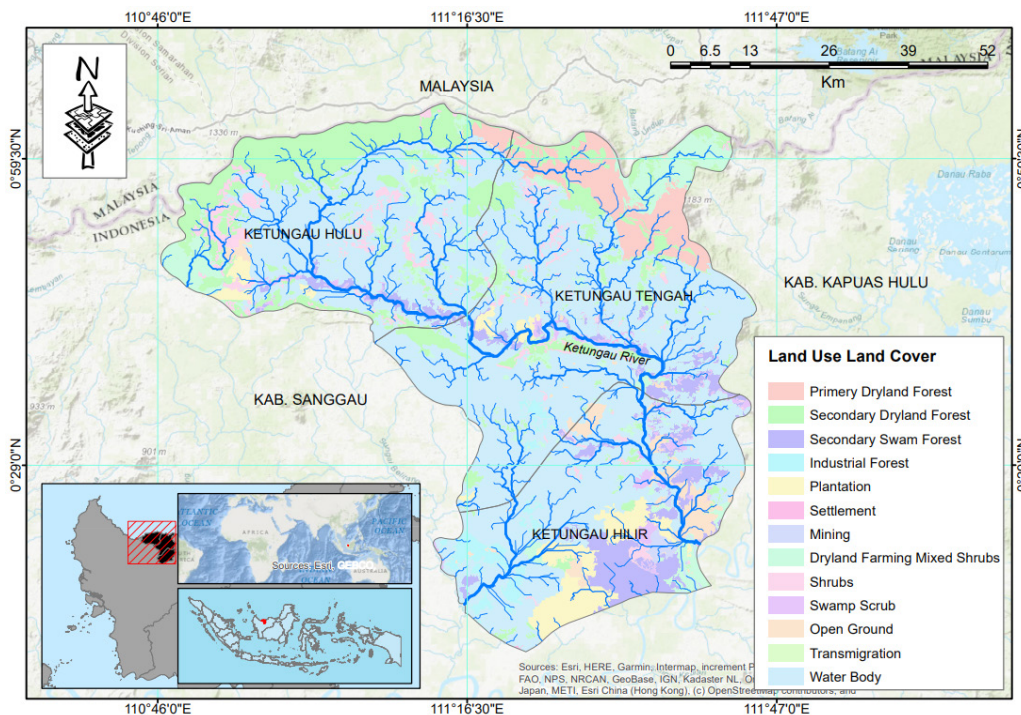


Figure 7. Ketungau Basin Soil Type

GIS and RS are used to identify and map groundwater potential zones, both in India and globally (Arulbalaji *et al.*, 2019). Different methods have been employed to determine potential of groundwater, such as the weighting method involving AHP. Assigning weights accurately is crucial to obtain good results (Arunbose *et al.*, 2021; Sajil Kumar *et al.*, 2022).

AHP was implemented to assign weights and reclassify the maps obtained in the ArcGIS version 10.8 environment. A final groundwater thematic map was prepared by overlaying all maps. According to Table 4, each class in the thematic layers was valuated based on relative importance to groundwater potential. The factors used during identification process were geology, soils, LULC, slope, lineament, and drainage density (Muthu & Sudalaimuthu, 2021). Each thematic layer was assigned a weighting along with its subclasses, namely lineament density (5%), lithology (10%), drainage density (15%), slope (20%), soil (20%), and LULC (25%), as presented in Table 5.

Potential map's accuracy depends on how precisely the weights are assigned to each layer (Machiwal *et al.*, 2011; Sajil Kumar *et al.*, 2022). The overlay methods were used in providing accurate weights to the thematic layers (Abrar *et al.*, 2021; Dar *et al.*, 2021; Doke *et al.*, 2021; Kaliraj *et al.*, 2014;

Sajil Kumar *et al.*, 2022). The weights assigned to various factors influencing groundwater or thematic layers and their corresponding normalized values estimated with the AHP technique are presented in Table 4.

In this study, the coefficient values of CI and CR were -0.297712816 and -0.24009098 , which means <0.1 , indicating the overall compactness of the pairwise comparison matrix (Duguma & Duguma, 2022; Goepel, 2013; Ş. Şener *et al.*, 2011) for consistent weights. Also, $RCI6 = 1.24$ due to the use of six criteria including lineament density, lithology, drainage density, slope, soil, and LULC.

The CR was -0.24009098 (≤ 0.1), meaning the overall matrix weight indicates a consistent value that can be used in calculating and determining factors. Based on paired AHP calculations for each parameter, the dominant factors affecting groundwater in the Ketungau Basin were hierarchically found to be LULC, soil type, slope, drainage density, and lineament density.

The overlay analysis results were obtained after assigning weights and ratings to all the influential factors. According to Figure 8, the five classes of groundwater potential zones in the study location are highly potential, potential, moderate, non-potential, and highly non-potential.

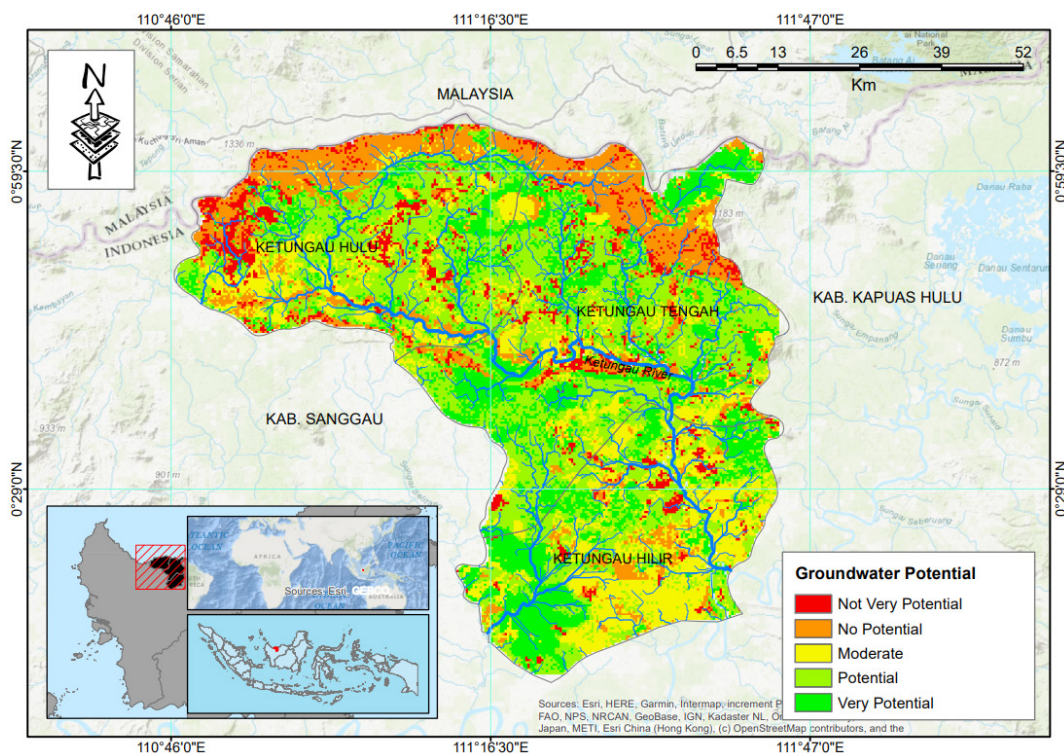


Figure 8. Groundwater Potential Zones of Ketungau Basin

Table 6. Groundwater potential zones classes and their quantitative values

Groundwater potential zones	Occupying study location (km ²)	Area in percent (%)
Highly Non-Potential	410.64	7.01
Non-Potential	934.04	15.95
Moderate	10,96,68	18.73
Potential	22,06,94	37.69
Highly Potential	1,207.54	20.62

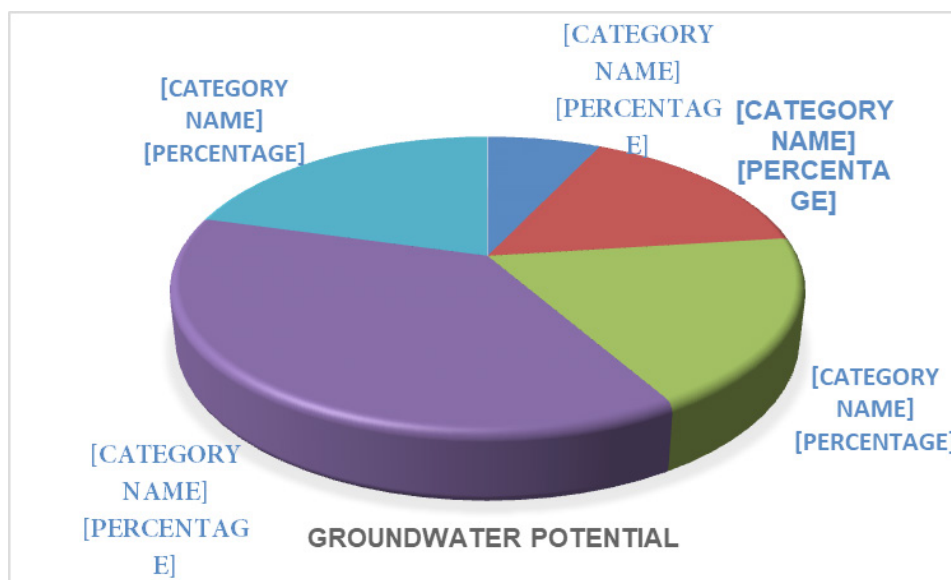


Figure 9. Pie Chart For Groundwater Potential Zones Classification

Based on **Figure 8**, the highly potential and potential zones of groundwater were identified in the central, eastern, and western parts of the Ketungau basin. In contrast, the non-potential and highly non-potential zones were predominantly found along the basin boundary in the north.

Conclusion

The study location has five classes of groundwater potential zones, namely highly potential, potential, moderate, non-potential, and highly non-potential. The highly potential and groundwater potential zones were identified in the central, eastern, and western parts of the Ketungau basin. This was due to the characterization by low gradient area, slope and drainage density, plain topography, and alluvium and granular sediment rock, contributing to high runoff and more infiltration. In contrast, the non-potential and highly non-potential zones were predominantly found along the northern basin boundary.

The Ketungau Basin soil, dominated by clay and sandy loam with a crumb structure, exhibits a better infiltration capacity than clay. Sandy loam and loam textures possess good groundwater potential zones compared to clay (Duguma & Duguma, 2022). According to a study by the University of Addis Ababa, soils with good texture such as loam, clay loam, and sandy loam, have good infiltration capacity and groundwater potential zones (B. Berhanu et al., 2013).

References

- Abiy, A. Z., Demissie, S. S., MacAlister, C., Dessu, S. B., & Melesse, A. M. (2016). Groundwater recharge and contribution to the Tana sub-basin, upper Blue Nile basin, Ethiopia. In *Landscape dynamics, soils and hydrological processes in varied climates* (pp. 463–481). Springer.
- Abrar, H., Legesse Kura, A., Esayas Dube, E., & Likisa Beyene, D. (2021). AHP based analysis of groundwater potential in the western escarpment of the Ethiopian rift valley. *Geology, Ecology, and Landscapes*, 1–14.
- Achu, A. L., Thomas, J., & Reghunath, R. (2020). Multi-criteria decision analysis for delineation of groundwater potential zones in a tropical river basin using remote sensing, GIS and analytical hierarchy process (AHP). *Groundwater for Sustainable Development*, 10, 100365.
- Agarwal, R., & Garg, P. K. (2016). Remote sensing and GIS based groundwater potential & recharge zones mapping using multi-criteria decision making technique. *Water Resources Management*, 30(1), 243–260.
- Ajay Kumar, V., Mondal, N. C., & Ahmed, S. (2020). Identification of groundwater potential zones using RS, GIS and AHP techniques: a case study in a part of Deccan volcanic province (DVP), Maharashtra, India. *Journal of the Indian Society of Remote Sensing*, 48, 497–511.
- Al-Abadi, A., & Al-Shamma'a, A. (2014). Groundwater potential mapping of the major aquifer in Northeastern Missan Governorate, South of Iraq by using analytical hierarchy process and GIS. *J Environ Earth Sci*, 10, 125–149.
- Allafta, H., Opp, C., & Patra, S. (2021). Identification of groundwater potential zones using remote sensing and GIS techniques: A case study of the Shatt Al-Arab Basin. *Remote Sensing*, 13(1), 112.
- Arulbalaji, P., Padmalal, D., & Sreelash, K. (2019). GIS and AHP techniques based delineation of groundwater potential zones: a case study from southern Western Ghats, India. *Scientific Reports*, 9(1), 1–17.
- Arun Kumar, K. C., Obi Reddy, G. P., Masilamani, P., & Sandeep, P. (2021). Spatial modelling for identification of groundwater potential zones in semi-arid ecosystem of southern India using Sentinel-2 data, GIS and bivariate statistical models. *Arabian Journal of Geosciences*, 14(14), 1–14.
- Arunbose, S., Srinivas, Y., Rajkumar, S., Nair, N. C., & Kaliraj, S. (2021). Remote sensing, GIS and AHP techniques based investigation of groundwater potential zones in the Karumeniyar river basin, Tamil Nadu, southern India. *Groundwater for Sustainable Development*, 14, 100586.
- Awawdeh, M., Obeidat, M., Al-Mohammad, M., Al-Qudah, K., & Jaradat, R. (2014). Integrated GIS and remote sensing for mapping groundwater potentiality in the Tulul al Ashaqif, Northeast Jordan. *Arabian Journal of Geosciences*, 7, 2377–2392.
- Ayktut, T. (2021). Determination of groundwater potential zones using Geographical Information Systems (GIS) and Analytic Hierarchy Process (AHP) between Edirne-Kalkansogut (northwestern Turkey). *Groundwater for Sustainable Development*, 12, 100545.
- Berhanu, B., Melesse, A. M., & Seleshi, Y. (2013). GIS-based hydrological zones and soil geo-database of Ethiopia. *Catena*, 104, 21–31.
- Berhanu, K. G., & Hatiye, S. D. (2020). Identification of groundwater potential zones using proxy data: case study of Megech Watershed, Ethiopia. *Journal of Hydrology: Regional Studies*, 28, 100676.

- Burayu, D. G. (2022). Identification of Groundwater Potential Zones Using AHP, GIS and RS Integration: A Case Study of Didessa Sub-Basin, Western Ethiopia. *Remote Sensing of Land*, 6 (1), 1–15.
- Dar, I. A., Sankar, K., & Dar, M. A. (2011). Deciphering groundwater potential zones in hard rock terrain using geospatial technology. *Environmental Monitoring and Assessment*, 173(1), 597–610.
- Dar, T., Rai, N., & Bhat, A. (2021). Delineation of potential groundwater recharge zones using analytical hierarchy process (AHP). *Geology, Ecology, and Landscapes*, 5(4), 292–307.
- De Stefano, L., & Lopez-Gunn, E. (2012). Unauthorized groundwater use: institutional, social and ethical considerations. *Water Policy*, 14(S1), 147–160.
- Dhinsa, D., Tamiru, F., & Tadesa, B. (2022). Groundwater potential zonation using VES and GIS techniques: A case study of Weserbi Guto catchment in Sululta, Oromia, Ethiopia. *Heliyon*, 8(8), e10245.
- Doke, A. B., Zolekar, R. B., Patel, H., & Das, S. (2021). Geospatial mapping of groundwater potential zones using multi-criteria decision-making AHP approach in a hardrock basaltic terrain in India. *Ecological Indicators*, 127, 107685.
- Duguma, T. A., & Duguma, G. A. (2022). Assessment of groundwater potential zones of upper Blue Nile River Basin using multi-influencing factors under GIS and RS environment: a case study on guder watersheds, Abay basin, Oromia region, Ethiopia. *Geofluids*, 2022.
- Döll, P., Hoffmann-Dobrev, H., Portmann, F. T., Siebert, S., Eicker, A., Rodell, M., Strassberg, G., & Scanlon, B. R. (2012). Impact of water withdrawals from groundwater and surface water on continental water storage variations. *Journal of Geodynamics*, 59, 143–156.
- Etikala, B., Golla, V., Li, P., & Renati, S. (2019). Deciphering groundwater potential zones using MIF technique and GIS: A study from Tirupati area, Chittoor District, Andhra Pradesh, India. *HydroResearch*, 1, 1–7.
- Fashae, O. A., Tijani, M. N., Talabi, A. O., & Adedeji, O. I. (2014). Delineation of groundwater potential zones in the crystalline basement terrain of SW-Nigeria: an integrated GIS and remote sensing approach. *Applied Water Science*, 4(1), 19–38.
- Forootan, E., & Seyedi, F. (2021). GIS-based multi-criteria decision making and entropy approaches for groundwater potential zones delineation. *Earth Science Informatics*, 14(1), 333–347.
- Gao, H., Liu, F., Yan, T., Qin, L., & Li, Z. (2022). Drainage Density and Its Controlling Factors on the Eastern Margin of the Qinghai-Tibet Plateau. *Frontiers in Earth Science*, 9, 1280.
- Goepel, K. D. (2013). Implementing the analytic hierarchy process as a standard method for multi-criteria decision making in corporate enterprises—a new AHP excel template with multiple inputs. *Proceedings of the International Symposium on the Analytic Hierarchy Process*, 2(10), 1–10.
- Guduru, J. U., & Jilo, N. B. (2022). Groundwater potential zone assessment using integrated analytical hierarchy process-geospatial driven in a GIS environment in Gobeles watershed, Wabe Shebele river basin, Ethiopia. *Journal of Hydrology: Regional Studies*, 44, 101218.
- Guru, B., Seshan, K., & Bera, S. (2017). Frequency ratio model for groundwater potential mapping and its sustainable management in cold desert, India. *Journal of King Saud University-Science*, 29(3), 333–347.
- Hall, R., & Nichols, G. (2002). Cenozoic sedimentation and tectonics in Borneo: climatic influences on orogenesis. *Geological Society, London, Special Publications*, 191(1), 5–22.
- Harini, P., Sahadevan, D. K., Das, I. C., Manikyamba, C., Durgaprasad, M., & Nandan, M. J. (2018). Regional groundwater assessment of Krishna River basin using integrated GIS approach. *Journal of the Indian Society of Remote Sensing*, 46, 1365–1377.
- Israil, M., Al-Hadithi, M., & Singhal, D. C. (2006). Application of a resistivity survey and geographical information system (GIS) analysis for hydrogeological zoning of a piedmont area, Himalayan foothill region, India. *Hydrogeology Journal*, 14(5), 753–759.
- Jha, M. K., Chowdary, V. M., & Chowdhury, A. (2010). Groundwater assessment in Salboni Block, West Bengal (India) using remote sensing, geographical information system and multi-criteria decision analysis techniques. *Hydrogeology Journal*, 18(7), 1713–1728.
- Kabeto, J., Adeba, D., Regasa, M. S., & Leta, M. K. (2022). Groundwater Potential Assessment Using GIS and Remote Sensing Techniques: Case Study of West Arsi Zone, Ethiopia. *Water*, 14(12), 1838.
- Kadam, A. K., Kale, S. S., Umrikar, B. N., Sankhua, R. N., & Pawar, N. J. (2017). Identifying possible locations to construct soil-water conservation structures by using hydro-geological and geospatial analysis. *Hydrospatial Anal*, 1(1), 18–27.
- Kaliraj, S., Chandrasekar, N., & Magesh, N. S. (2014). Identification of potential groundwater recharge zones in Vaigai upper basin, Tamil Nadu, using GIS-based analytical hierarchical process (AHP) technique. *Arabian Journal of Geosciences*, 7(4), 1385–1401.
- Kattimani, J., Murthy, A., & Kumar, S. R. (2018). Identification of ground water potential zone using remote sensing and Gis techniques. *International Journal of Advanced Research*, 6(5), 948–953.
- Kindie, A. T., Enku, T., Moges, M. A., Geremew, B. S., & Atinkut, H. B. (2018). Spatial analysis of groundwater potential using GIS based multi criteria decision analysis method in Lake Tana basin, Ethiopia. *International Conference on Advances of Science and Technology*, 439–456.
- Kumar, S. K., Chandrasekar, N., Seralathan, P., Godson, P. S., & Magesh, N. S. (2012). Hydrogeochemical study of shallow carbonate aquifers, Rameswaram Island, India. *Environmental Monitoring and Assessment*, 184(7), 4127–4138.
- Kumar, A., & Krishna, A. P. (2018). Assessment of groundwater potential zones in coal mining impacted hard-rock terrain of India by integrating geospatial and analytic hierarchy process (AHP) approach. *Geocarto International*, 33(2), 105–129.
- Kumar, T., Gautam, A. K., & Kumar, T. (2014). Appraising the accuracy of GIS-based multi-criteria decision making technique for delineation of groundwater potential zones. *Water Resources Management*, 28, 4449–4466.
- Kuria, D. N., Gachari, M. K., Macharia, M. W., & Mungai, E. (2012). Mapping groundwater potential in Kitui District, Kenya using geospatial technologies. *Int. J. Water Res. Environ. Eng.* 2012, 4, 15–22.
- Lentswe, G. B., & Molwalefhe, L. (2020). Delineation of potential groundwater recharge zones using analytic hierarchy process-guided GIS in the semi-arid Motloutse watershed, eastern Botswana. *Journal of Hydrology: Regional Studies*, 28, 100674.
- Lillesand, T., Kiefer, R. W., & Chipman, J. (2015). *Remote sensing and image interpretation*. John Wiley & Sons.
- Machiwal, D., Jha, M. K., & Mal, B. C. (2011). Assessment of groundwater potential in a semi-arid region of India using remote sensing, GIS and MCDM techniques. *Water Resources Management*, 25(5), 1359–1386.
- Maheswaran, G., Selvarani, A. G., & Elangovan, K. (2016). Groundwater resource exploration in Salem district, Tamil Nadu using GIS and remote sensing. *Journal of Earth System Science*, 125(2), 311–328.
- Mallick, J., Khan, R. A., Ahmed, M., Alqadhi, S. D., Alsubih, M., Falqi, I., & Hasan, M. A. (2019). Modeling groundwater potential zone in a semi-arid region of Aseer using fuzzy-AHP and geoinformation techniques. *Water*, 11(12), 2656.

- Moisa, M. B., Merga, B. B., & Gameda, D. O. (2022). Land suitability evaluation for surface irrigation using geographic information system: a case study in Didessa River Sub-Basin, Western Ethiopia. *Sustainable Water Resources Management*, 8(3), 1–12.
- Mukherjee, P., Singh, C. K., & Mukherjee, S. (2012). Delineation of groundwater potential zones in arid region of India—a remote sensing and GIS approach. *Water Resources Management*, 26, 2643–2672.
- Murmu, P., Kumar, M., Lal, D., Sonker, I., & Singh, S. K. (2019). Delineation of groundwater potential zones using geospatial techniques and analytical hierarchy process in Dumka district, Jharkhand, India. *Groundwater for Sustainable Development*, 9, 100239.
- Muthu, K., & Sudalaimuthu, K. (2021). Integration of Remote sensing, GIS, and AHP in demarcating groundwater potential zones in Pattukottai Taluk, Tamilnadu, India. *Arabian Journal of Geosciences*, 14(17), 1–18.
- Naghbi, S. A., Pourghasemi, H. R., & Dixon, B. (2016). GIS-based groundwater potential mapping using boosted regression tree, classification and regression tree, and random forest machine learning models in Iran. *Environmental Monitoring and Assessment*, 188(1), 1–27.
- Nampak, H., Pradhan, B., & Abd Manap, M. (2014). Application of GIS based data driven evidential belief function model to predict groundwater potential zonation. *Journal of Hydrology*, 513, 283–300.
- O'leary, D. W., Friedman, J. D., & Pohn, H. A. (1976). Lineament, linear, lineation: some proposed new standards for old terms. *Geological Society of America Bulletin*, 87(10), 1463–1469.
- Pinto, D., Shrestha, S., Babel, M. S., & Ninsawat, S. (2017). Delineation of groundwater potential zones in the Comoro watershed, Timor Leste using GIS, remote sensing and analytic hierarchy process (AHP) technique. *Applied Water Science*, 7(1), 503–519.
- Rafati, S., & Nikeghbal, M. (2017). Groundwater exploration using fuzzy logic approach in GIS for an area around an anticline, Fars Province. *The International Archives of the Photogrammetry, Remote Sensing and Spatial Information Sciences*, 42(4/W4), 441–445.
- Rahmati, O., Pourghasemi, H. R., & Melesse, A. M. (2016). Application of GIS-based data driven random forest and maximum entropy models for groundwater potential mapping: a case study at Mehran Region, Iran. *Catena*, 137, 360–372.
- Rajasekhar, M., Raju, G. S., Raju, R. S., Ramachandra, M., & Kumar, B. P. (2018). Data on comparative studies of lineaments extraction from ASTER DEM, SRTM, and Cartosat for Jilledubanderu River basin, Anantapur district, AP, India by using remote sensing and GIS. *Data in Brief*, 20, 1676–1682.
- Rajasekhar, M., Raju, G. S., Sreenivasulu, Y., & Raju, R. S. (2019). Delineation of groundwater potential zones in semi-arid region of Jilledubanderu river basin, Anantapur District, Andhra Pradesh, India using fuzzy logic, AHP and integrated fuzzy-AHP approaches. *HydroResearch*, 2, 97–108.
- Rajasekhar, M., Sudarsana Raju, G., Bramaiah, C., Deepthi, P., Amaravathi, Y., & Siddi Raju, R. (2018). Delineation of groundwater potential zones of semi-arid region of YSR Kadapa District, Andhra Pradesh, India using RS, GIS and analytic hierarchy process. *Remote Sensing of Land*, 2(2), 76–86.
- Rajasekhar, M., Sudarsana Raju, G., Siddi Raju, R., & Imran Basha, U. (2017). Landuse and landcover analysis using remote sensing and GIS: A case study in Uravakonda, Anantapur District, Andhra Pradesh, India. *International Research Journal of Engineering and Technology (IRJET)*, 4(9), 780–785.
- Rajaveni, S. P., Brindha, K., & Elango, L. (2017). Geological and geomorphological controls on groundwater occurrence in a hard rock region. *Applied Water Science*, 7(3), 1377–1389.
- Razandi, Y., Pourghasemi, H. R., Neisani, N. S., & Rahmati, O. (2015). Application of analytical hierarchy process, frequency ratio, and certainty factor models for groundwater potential mapping using GIS. *Earth Science Informatics*, 8(4), 867–883.
- Roy, S., & Sahu, A. S. (2015). Investigation for potential groundwater recharge area over the Kunur river basin, Eastern India: an integrated approach with geosciences. *Journal of Geomatics*, 9(2), 165–177.
- Sajil Kumar, P. J., Elango, L., & Schneider, M. (2022). GIS and AHP Based Groundwater Potential Zones Delineation in Chennai River Basin (CRB), India. *Sustainability*, 14(3), 1830.
- Santy, L. D., & Panggabean, H. (2013). The Potential of Ketungau and Silat Shales in Ketungau and Melawi Basins, West Kalimantan: For Oil Shale and Shale Gas Exploration. *Indonesian Journal on Geoscience*, 8(1), 39–53.
- Saranya, T., & Saravanan, S. (2020). Groundwater potential zone mapping using analytical hierarchy process (AHP) and GIS for Kancheepuram District, Tamilnadu, India. *Modeling Earth Systems and Environment*, 6(2), 1105–1122.
- Sedrette, S., & Rebai, N. (2016). Automatic extraction of lineaments from Landsat Etm+ images and their structural interpretation: Case Study in Nefza region (North West of Tunisia). *Journal of Research in Environmental and Earth Sciences*, 4(2016), 139–145.
- Şener, E., Şener, Ş., & Davraz, A. (2018). Groundwater potential mapping by combining fuzzy-analytic hierarchy process and GIS in Beyşehir Lake Basin, Turkey. *Arabian Journal of Geosciences*, 11(8), 1–21.
- Şener, Ş., Sener, E., & Karagüzel, R. (2011). Solid waste disposal site selection with GIS and AHP methodology: a case study in Senirkent–Uluborlu (Isparta) Basin, Turkey. *Environmental Monitoring and Assessment*, 173, 533–554.
- Shailaja, G., Kadam, A. K., Gupta, G., Umrikar, B. N., & Pawar, N. J. (2019). Integrated geophysical, geospatial and multiple-criteria decision analysis techniques for delineation of groundwater potential zones in a semi-arid hard-rock aquifer in Maharashtra, India. *Hydrogeology Journal*, 27(2), 639–654.
- Smith, R. B., Betzler, C., Brass, G. W., Huang, Z., Linsley, B. K., Menill, D., Müller, C. M., Nederbragt, A. J., Nichols, G. I., & Pubellier, M. (1990). Depositional history of the Celebes Sea from ODP Sites 767 and 770. *Geophysical Research Letters*, 17(11), 2061–2064.
- Sresto, M. A., Siddika, S., Haque, M. N., & Saroar, M. (2021). Application of fuzzy analytic hierarchy process and geospatial technology to identify groundwater potential zones in north-west region of Bangladesh. *Environmental Challenges*, 5, 100214.
- Swetha, T. V., Gopinath, G., Thrivikramji, K. P., & Jesiya, N. P. (2017). Geospatial and MCDM tool mix for identification of potential groundwater prospects in a tropical river basin, Kerala. *Environmental Earth Sciences*, 76, 1–17.
- Tamiru, H., & Wagari, M. (2021). Evaluation of data-driven model and GIS technique performance for identification of Groundwater Potential Zones: A case of Fincha Catchment, Abay Basin, Ethiopia. *Journal of Hydrology: Regional Studies*, 37, 100902.
- Teichmüller, M., & Teichmüller, R. (1982). The geological basis of coal formation. *Stach's Textbook of Coal Petrology*, 3, 5–86.
- Terzer, S., Wassenaar, L. I., Araguás-Araguás, L. J., & Aggarwal, P. K. (2013). Global isoscapes for $\delta 18 O$ and $\delta 2 H$ in precipitation: improved prediction using regionalized climatic regression models. *Hydrology and Earth System Sciences*, 17(11), 4713–4728.
- Thannoun, R. G. (2013). Automatic extraction and geospatial analysis of lineaments and their tectonic significance in some areas of Northern Iraq using remote sensing techniques and GIS. *International Journal Of Enhanced Research In Science Technology & Engineering Bulletin*, 2(2), 1–11.
- Thapa, R., Gupta, S., Guin, S., & Kaur, H. (2017). Assessment of groundwater potential zones using multi-influencing factor (MIF) and GIS: a case study from Birbhum district, West Bengal. *Applied Water Science*, 7(7), 4117–4131.

- Waikar, M. L., & Nilawar, A. P. (2014). Identification of groundwater potential zone using remote sensing and GIS technique. *International Journal of Innovative Research in Science, Engineering and Technology*, 3(5), 12163–12174.
- Water, U. N. (2022). Groundwater: Making the invisible visible. *The United Nations World Water Development Report*.
- Yeh, H.-F., Cheng, Y.-S., Lin, H.-I., & Lee, C.-H. (2016). Mapping groundwater recharge potential zone using a GIS approach in Hualian River, Taiwan. *Sustainable Environment Research*, 26(1), 33–43.
- Yıldırım, Ü. (2021). Identification of Groundwater Potential Zones Using GIS and Multi-Criteria Decision-Making Techniques: A Case Study Upper Coruh River Basin (NE Turkey). *ISPRS International Journal of Geo-Information*, 10(6), 396.