

A Numerical Analysis of Landslide Movements Considering the Erosion and Deposition along the Flow Path

Aminudin Syah¹, Teuku Faisal Fathani^{2,3,*}, Fikri Faris^{2,3}

¹Department of Civil Engineering, Faculty of Engineering, University of Lampung, Bandar Lampung, INDONESIA

²Department of Civil and Environmental Engineering, Universitas Gadjah Mada, Yogyakarta, INDONESIA

³Centre for Disaster Mitigation and Technological Innovation (GAMA-InaTEK), Universitas Gadjah Mada, Yogyakarta, INDONESIA

*Corresponding authors: tfathani@ugm.ac.id

SUBMITTED 01 October 2018 REVISED 09 April 2019 ACCEPTED 07 May 2019

ABSTRACT Landslides are one of the most frequent disasters which occur widespread in Indonesia. This disaster often causes damages and fatalities. One of the mitigations efforts to reduce potential loss is by predicting the area affected by landslide movement. This research developed a numerical model of landslide movement by incorporating the erosion and deposition laws along the flow path. This model improves the accuracy of the previous models which assume that landslide volume is constant without any consideration for the erosion and deposition. The governing equation of this newly developed model uses the Eulerian numerical approach based on the finite difference scheme. The erosion-deposition laws applied in this research are from Egashira et al. (2001), McDougall and Hungr (2005), and Blanc (2008). The simulation program applies Python programming language and examines an imaginary slope with ellipsoid-shaped of source area. The simulation result shows that the additional erosion-deposition formula can enlarge the volume and the affected area of landslide movement. It is clarified that the erosion rate is a determinant factor affecting the results of calculation.

KEYWORDS Rapid landslide; Erosion law; Finite difference; Entrainment; Landslide travel distance

© The Author(s) 2018. This article is distributed under a Creative Commons Attribution-ShareAlike 4.0 International license.

1 INTRODUCTION

The damage potential of landslides is determined by the velocity and the affected area. Therefore, predictions of landslide velocity, travelling path, depositional area, and flow depth are important keys in landslide risk and hazard assessments. This prediction can be used to estimate the damage potential, to design protective measures, or to identify the possibility of secondary effects such as landslide-generated wave and landslide dam that triggers flood (McDougall and Hungr, 2004; Hungr, 2007).

Miyamoto (2010) suggested a 2D numerical model simulate landslide movement in Unzen-Mayuyama, Japan. This model gave the description of the landslide velocity and the affected area with finite difference numerical scheme. Fathani, Legono and Alfath (2017) further developed a numerical model by adding the earthquake factor and rheology parameter from Coulomb and Voellmy into the simulation model. Both numerical models assume that

landslide volume is constant. In reality, landslide volume can increase because of erosion and deposition process along the landslide path. The landslide occurring in Pasir Panjang Village, Salem Sub-district, Brebes Regency, Central Java, on Thursday, February 22nd, 2018 was one of the examples.

A landslide-movement numerical model by implementing erosion gives a better description, with entrainment process as its key role (Pirulli and Pastor, 2012). Deposition and erosion flow formula has been widely proposed in various literature about numerous flow types. This research discusses the landslide numerical model by adding parameters of deposition and erosion that occur along the landslide path. The erosion law applied in this research was one that was suggested by Egashira, Itoh and Takeuchi (2001), McDougall and Hungr (2005), and Blanc (2008).

The simulation program was developed using the Python programming language with a finite difference scheme. The rheology model used in

the calculation was the hyper-concentrated solid-liquid mixture (Egashira et al., 1989; Egashira, 1997; Egashira, Miyamoto and Ito, 1997) and the Mohr-Coulomb. The erosion law was added into the numerical model and then was further tested on an imaginary slope. The purpose of this research is to develop landslide movement simulation program by incorporating the erosion laws suggested by Egashira, Itoh and Takeuchi (2001), McDougall and Hungr (2005) and Blanc (2008). This research also discusses the effect of erosion and deposition on the volume and covered area of landslide movement.

2 LANDSLIDE MOVEMENT NUMERICAL MODEL

2.1 Landslide Movement Governing Equations

Landslide movement governing equations suggested by Miyamoto (2010) and Fathani, Legono and Karnawati (2017) is based on the momentum conservation law. The mass movement equation is shown in Eq. (1) and the continuity equation is shown in Eq. (2). The continuity equation is applied when there is no addition or reduction of landslide volume caused by erosion and deposition along the flow path.

$$\frac{\partial \mathbf{M}}{\partial t} + \beta(\mathbf{M}\mathbf{u}^t)\nabla = -g_z h \nabla H - \frac{\mathbf{T}}{\rho_m} \quad (1)$$

$$\frac{\partial h}{\partial t} + \nabla \mathbf{M} = 0 \quad (2)$$

In which \mathbf{M} is the flux vector; β is the coefficient of momentum; \mathbf{u} is the depth-averaged velocity; \mathbf{u}^t is the transverse vector of \mathbf{u} ; g_z is the gravitational acceleration; h is the thickness of landslide mass; H is the slope height; \mathbf{T} is the shear stress acting on the sliding surface; and ρ_m is the average density of landslide. ∇ is explained in Eq. (3) as follows:

$$\nabla = \mathbf{i} \frac{\partial}{\partial x} + \mathbf{j} \frac{\partial}{\partial y} \quad (3)$$

Whereas \mathbf{i} , \mathbf{j} are the vector units on the direction x , y on Cartesian coordinate. Average density (ρ_m) is described in detail by Miyamoto (2010) and Fathani, Legono and Karnawati (2017).

Shear stress (\mathbf{T}) in the hyperconcentrated solid-liquid mixture model in Eq. (1) is also described in detail by Miyamoto (2010) and Fathani, Legono and Alfath (2017):

$$\mathbf{T} = \mathbf{T}_s + \mathbf{T}_d + \mathbf{T}_f \quad (4)$$

$$\mathbf{T}_s = \alpha \rho_m (1 - r_u) g_z h \cos \theta \tan \phi_s \frac{\mathbf{u}}{|\mathbf{u}|} \quad (5)$$

$$\mathbf{T}_d = \frac{25}{4} k_g \rho_s (1 - e^2) c_s^{1/3} \left(\frac{d}{h} \right) |\mathbf{u}| \mathbf{u} \quad (6)$$

$$\mathbf{T}_f = \frac{25}{4} \frac{k_f \rho_l (1 - c_s)^{5/3}}{c_s^{2/3}} \left(\frac{d}{h} \right) |\mathbf{u}| \mathbf{u} \quad (7)$$

where \mathbf{T}_s , \mathbf{T}_d , \mathbf{T}_f are the shear stress on a solid phase, colliding particles and supported by the interstitial liquid phase, respectively; r_u is the ratio of pore water pressure at a sliding surface to the total pressure above the sliding surface; c_s is the concentration of the solid phase of volume in the flow; θ is the eroded slope degree angle; ϕ_s is the internal friction angle along the sliding surface; ρ_s is the solid mass density; ρ_l is the fluid mass density; d is the diameter of particle in the flow; e is the coefficient of restitution; k_g and k_f are the empirical constant, $k_g = 0.0828$ and $k_f = 0.25$.

Shear stress (\mathbf{T}) for the Mohr-Coulomb model in Eq. (1) was described in detail by Fathani, Legono and Alfath (2017) as follows:

$$\mathbf{T}_s = \rho_m (H_c + (1 - r_u) g_z h \cos \theta \tan \phi_s) \frac{\mathbf{u}}{|\mathbf{u}|} \quad (8)$$

$$\mathbf{T}_d + \mathbf{T}_f = 0 \quad (9)$$

In which, $H_c = c/\rho_m$; c is the cohesion of soil along the sliding surface.

2.2 Condition of Landslide Movement

Eq. (5) to Eq. (9) can only be used if the landslide moves because the friction on dense phase, which is a part of the shear stress (\mathbf{T}) should be in balance with the external force. In the condition where the landslide stops, the shear stress (\mathbf{T}) described by Miyamoto (2010) and Fathani, Legono and Alfath (2017) turns into:

$$\frac{\mathbf{T}}{\rho_m} = \frac{\mathbf{T}_s}{\rho_m} = -(\beta(\mathbf{M}\mathbf{u}^t)\nabla + g_z h \nabla H) \quad (10)$$

Shear stress (\mathbf{T}) in the hyper-concentrated solid-liquid mixture model is equal to the solid friction stress and less than the value on the right side of Eq. (5) as follows (Miyamoto, 2010):

$$|\mathbf{T}| = |\mathbf{T}_s| \leq \alpha c_s (\rho_s - \eta \rho_l) g_z h \cos \theta \tan \phi_s \quad (11)$$

As for the Mohr-Coulomb model, shear stress (\mathbf{T}) is equal to the solid friction stress and less than the value on the right side of the Eq. (8) as follows (Fathani, Legono and Alfath, 2017):

$$|\mathbf{T}| = |\mathbf{T}_s| \leq \rho_m (1 - r_u) g_z h \cos \theta \tan \phi_s \quad (12)$$

Furthermore, Miyamoto (2010) also described the application of the finite difference method to model the landslide mass when stopping at Δt .

2.3 Erosion and Deposition

Depth integrated models usually apply a simple erosion law i.e., the Hungr's erosion law (Hungr and Evans, 2004), the modified erosion law (Egashira, 1993; Egashira, Itoh and Takeuchi, 2001), path-controlled erosion (Chen, Crosta and Lee, 2006), and the erosion law suggested by Blanc (2008). These erosion laws do not give any accurate result and do not have good consistency; however, they are still accepted to be implemented for various simple problems.

2.4 Egashira Erosion Law

According to Egashira (1993), the sketch that described the mechanism of debris flow to erode a sloped surface is shown in Figure 1. The sediment deposition rate on the slope eroded by the debris flow is formulated as follows (Pastor *et al.*, 2014):

$$e_r \Delta s = e_r v \Delta t = c_* v \Delta h \quad (13)$$

In which e_r is the erosion rate; v is the average velocity of debris flow; h is the depth of landslide flow; Δs is the distance the debris flow travels in a time period of Δt .

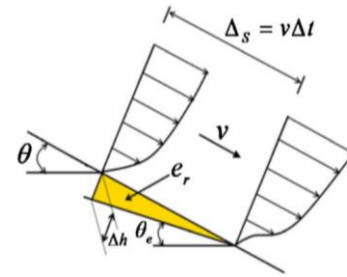


Figure 1. Sketch of erosion by debris flow (Pastor *et al.*, 2014).

The Egashira erosion law is obtained from the result of $\theta - \theta_e = \arctan(\Delta h / \Delta s)$ being substituted to Eq. (13) as follows (Pastor *et al.*, 2014):

$$e_r = c_* v \tan(\theta - \theta_e) \quad (14)$$

In which θ_e is the equilibrium angle of the eroded slope.

The Egashira erosion law is added with the empirical factor of K to improve its accuracy. This addition is based on the debris flow research in Tsing Shan in 1990 and 2000; therefore, the Egashira erosion law is modified into (Blanc, 2008):

$$e_r = K c_* v \tan(\theta - \theta_e) \quad (15)$$

McDougall and Hungr Erosion Law

According to Hungr (1995), the erosion process that occurs during the debris flow path is formulated into:

$$e_r = E_s h v \quad (16)$$

where E_s is the rate of erosion.

McDougall and Hungr (2005) assumed that the estimated total volume exiting the zone (V_f) is the sum of the initial volume (V_0) and the volume taken from erosion (V_e). Therefore, the E_s value can also be obtained from the estimated total volume entering the zone (V_0), the estimated total volume exiting the zone ($V_f = V_0 + V_e$), and the approximate average path length of the zone (l), with the following formula,

$$E_s = \frac{\ln(V_f/V_0)}{l} \quad (17)$$

E_s is defined as the average addition rate which comes from the natural addition of erosion process with displacement (McDougall and Hungr, 2005).

Blanc Erosion Law

The Blanc erosion law (2008) is a new equation which is a combination of the Egashira erosion law (1993) and Hungr (1995) erosion law. According to Blanc (2008), the erosion process occurring during the landslide flow path is formulated as follows,

$$e_r = K v h (\tan \theta)^{2.5} \quad (18)$$

2.5 Deposition Law

The Egashira law can also be applied to explain the process of deposition of debris flow during its travel. If $\theta_e > \theta$, the erosion rate (e_r) is negative. This means deposition exists; this then causes the debris flow to decrease during the travel. If $e_r < 0$, then $\partial h / \partial t < 0$. In the calculation, the Egashira law considers that the amount of deposition is not based on the reduction of the particle height (reduction of debris flow depth), but based on the particle velocity (debris flow velocity) equal to 0 m/s.

Egashira law is only used to calculate the erosion process. Therefore, if the erosion rate is negative, there is no change in the debris flow volume. The erosion process is more dominant compared to the deposition when debris flow

occurs. Therefore, the longer debris flow travels result in a larger volume when it stops.

2.6 Erosion Law Adaptation to Numerical Model

For the sake of the simulation accuracy, an erosion law was implemented to the numerical model. A modification was made on the flow continuity equation, which resulted in the following equation:

$$\frac{\partial h}{\partial t} + \nabla \mathbf{M} = -e_r \quad (19)$$

3 CONCLUSIONS SIMULATION MODEL AND NUMERICAL EQUATION SCHEME

3.1 Simulation Model

The simulation model is based on continuum mechanics in the form of Depth-Integrated Models. This simulation model used Eq. (1) to calculate flux and Eq. (2) to obtain the thickness of landslide mass for each time period. Shear stress (\mathbf{T}) have resulted from two constitutive equations of landslide material, which are the Egashira and Coulomb constitutive equation. Erosion and deposition occurred along the landslide path were calculated with erosion laws of Egashira, Itoh and Takeuchi (2001), McDougall and Hungr (2005), and Blanc (2008).

3.2 Finite Difference Scheme

Momentum Equation

If the Eq. (1) is described on $x - y$ coordinates, the results are Eq. (20) and Eq. (21). Figure 2 shows the description of finite-difference model meshing (modified by Fathani, Legono and Karnawati, 2017). Flux on x -axis can be rewritten, as shown in Eq. (22).

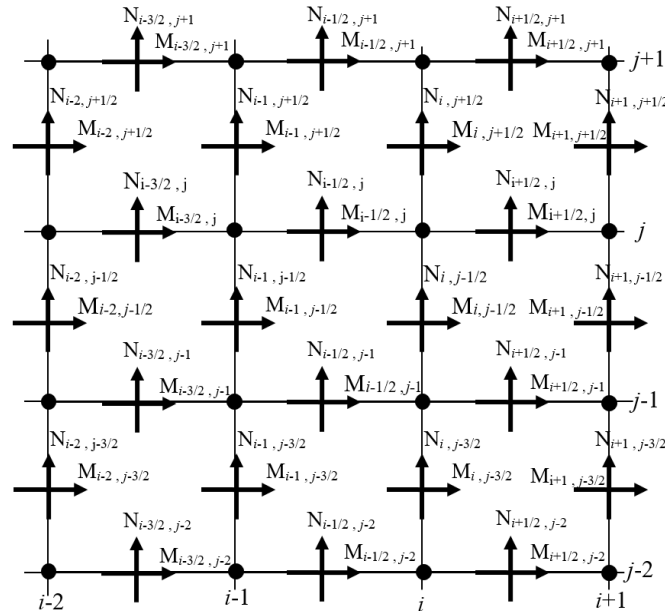


Figure 2. Mesh description on finite difference scheme.

$$\frac{\partial M}{\partial t} + \beta u \frac{\partial M}{\partial x} + \beta v \frac{\partial M}{\partial y} = -g_z h \frac{\partial H}{\partial x} - \frac{\mathbf{T}}{\rho_m} \quad (20)$$

$$\frac{\partial N}{\partial t} + \beta u \frac{\partial N}{\partial x} + \beta v \frac{\partial N}{\partial y} = -g_z h \frac{\partial H}{\partial y} - \frac{\mathbf{T}}{\rho_m} \quad (21)$$

$$\frac{M_{i-1/2, j}^{n+1/2} - M_{i-1/2, j}^{n-1/2}}{\Delta t} + P_{MX} + P_{MY} = P_{MGZ} + P_{MT} \quad (22)$$

Whereas n shows a time of n , i and j is the grid on x and y -axis, respectively.

Eq. (22) can be rewritten on Eq. (23) as follows:

$$M_{i-1/2, j}^{n+1/2} = M_{i-1/2, j}^{n-1/2} - [P_{MF} - P_{MT}] \Delta t \quad (23)$$

$$P_{MF} = (P_{MX} + P_{MY} + P_{MGZ} - P_{MGX} - P_{MNU}) \quad (24)$$

The P_{MX} value is shown in Table 1, and P_{MGZ} is described in Eq. (25) as follows:

$$P_{MGZ} = -g_z h_{i-1/2, j}^n \left(\frac{\partial H}{\partial x} \right) \quad (25)$$

In which,

$$h_{i-1/2, j}^n = \frac{[(h_{i, j}^n) + (h_{i-1, j}^n)]}{2}$$

$$\frac{\partial H}{\partial x} = \frac{(h_{i, j}^n + z_{i, j}) - (h_{i-1, j}^n + z_{i-1, j})}{\Delta x}$$

Table 1. PMX Value

No	Condition	P_{MX}	Eq.
1	$u_2 > 0$	$P_{MX} = \beta \frac{u_2 M_{i-1/2, j}^{n-1/2} - u_1 M_{i-3/2, j}^{n-1/2}}{\Delta x}$	(26)
2	$u_2 < 0$	$P_{MX} = \beta \frac{u_3 M_{i+1/2, j}^{n-1/2} - u_2 M_{i-1/2, j}^{n-1/2}}{\Delta x}$	(27)
3	$u_2 = 0,$ $u_1 > 0,$ $u_3 < 0$	$P_{MX} = \beta \frac{u_1 M_{i-3/2, j}^{n-1/2} - u_3 M_{i+1/2, j}^{n-1/2}}{\Delta x}$	(28)
4	$u_2 = 0,$ $u_1 \leq 0,$ $u_3 \geq 0$	$P_{MX} = \beta \frac{u_3 M_{i+1/2, j}^{n-1/2} - u_1 M_{i-3/2, j}^{n-1/2}}{\Delta x}$	(29)
5	$u_2 = 0,$ $u_1 > 0,$ $u_3 \geq 0$	$P_{MX} = \beta \frac{-u_1 M_{i-3/2, j}^{n-1/2}}{\Delta x}$	(30)
6	$u_2 = 0,$ $u_1 \leq 0,$ $u_3 < 0$	$P_{MX} = \beta \frac{-u_3 M_{i+1/2, j}^{n-1/2}}{\Delta x}$	(31)

Value of u_2, u_1, u_3 and v_2, v_1, v_3 is shown in Table 2 as follows:

Table 2. Value of u and v

Value	u	Eq.	Value	v	Eq.
u_1	$\frac{M_{i-3/2,j}^{n-1/2}}{h_{i-3/2,j}^{n-1/2}}$	(32)	v_1	$\frac{N_{i-1/2,j-1}^{n-1/2}}{h_{i-1/2,j-1}^{n-1/2}}$	(35)
u_2	$\frac{M_{i-1/2,j}^{n-1/2}}{h_{i-1/2,j}^{n-1/2}}$	(33)	v_2	$\frac{N_{i-1/2,j}^{n-1/2}}{h_{i-1/2,j}^{n-1/2}}$	(36)
u_3	$\frac{M_{i+1/2,j}^{n-1/2}}{h_{i+1/2,j}^{n-1/2}}$	(34)	v_3	$\frac{N_{i-1/2,j+1}^{n-1/2}}{h_{i-1/2,j+1}^{n-1/2}}$	(37)

The shear resistance value of hyper-concentrated solid-liquid mixture model is obtained from Eq. (4) up to Eq. (7) at axis x and y as follows:

$$P_{MT} = T_s + T_d + T_f \tag{38}$$

$$T_s = \alpha c_s (\rho_s - \eta \rho_l) g_z h_{i-1/2,j}^n \cos \theta_{i,j} \tan \phi_s \frac{M_{i-1/2,j}^{n-1/2}}{|u|h} \tag{39}$$

In which,

$$\tan \beta_{i,j} = \frac{z_{i-1/2,j+1/2} - z_{i-1/2,j-1/2}}{\Delta y}$$

$$\tan \alpha_{i,j} = \frac{z_{i,j} - z_{i-1,j}}{\Delta x} \quad \cos \theta_{i,j} = \frac{1}{(\tan^2 \alpha_{i,j} + \tan^2 \beta_{i,j} + 1)^{1/2}}$$

$$|u|h = \sqrt{(M_{i-1/2,j}^{n-1/2})^2 + (N_{i-1/2,j}^{n-1/2})^2 + (wh)^2}$$

$$wh = M_{i-1/2,j}^{n-1/2} \tan \alpha_{i,j} + N_{i-1/2,j}^{n-1/2} \tan \beta_{i,j}$$

$$T_d = \frac{25}{4} k_g \rho_s (1 - e^2) c_s^{1/3} \left(\frac{d}{h_{i-1/2,j}^n} \right)^2 \frac{|u|h M_{i-1/2,j}^{n-1/2}}{(h_{i-1/2,j}^n)^2} \tag{40}$$

$$T_f = \frac{25}{4} k_f \rho_l (1 - c)^{5/3} c_s^{2/3} \left(\frac{d}{h_{i-1/2,j}^n} \right)^2 \frac{|u|h M_{i,j}^{n+1/2}}{(h_{i-1/2,j}^n)^2} \tag{41}$$

The above-mentioned equations can be used if the landslide is in motion. Eq. (42) is used to evaluate whether the mesh stops.

$$0 = [(P_{MF}^2 + P_{NF}^2) - (T_s')^2] (\Delta t')^2 + (M_{i-1,j}^{n-1/2} P_{MF} + N_{i-1,j}^{n-1/2} P_{NF}) (\Delta t') - \sqrt{(M_{i-1,j}^n)^2 + (N_{i-1,j}^n)^2} \tag{42}$$

$(0 < \Delta t' < \Delta t)$

$$T_s' = \alpha c_s (\rho_s - \eta \rho_l) g_z h_{i-1/2,j} \cos \theta_{i,j} \tan \phi_s \tag{43}$$

If $(0 < \Delta t' < \Delta t)$ condition is fulfilled, then it can be determined whether the mesh keeps moving or stops, as described in Eq. (44) as follows:

$$\sqrt{(P_{MF}^2 + P_{NF}^2)} \leq |P_{MT}| \tag{44}$$

If Eq. (44) is fulfilled, the mesh stops, but if it is not, then the flux on the next step can be calculated with the equation as follows:

$$M_{i-1/2,j}^{n+1/2} = \left[P_{MF} - \frac{T_s'}{\rho_m} \frac{P_{MF}}{\sqrt{P_{MF}^2 + P_{NF}^2}} \right] (\Delta t - \Delta t') \tag{45}$$

If $(0 < \Delta t' < \Delta t)$ condition is not fulfilled, then the flux is not equal to zero on the interval of Δt ; therefore, the flux on the next step can be calculated with Eq. (46) as follows:

$$M_{i-1/2,j}^{n+1/2} = M_{i-1/2,j}^{n-1/2} - [P_{MF} - P_{MT}] \Delta t \tag{46}$$

The flux on Eq. (39), (40) and (41) are applied on moving condition, therefore Eq. (46) is semi-implicit, as shown in the equation as follows:

$$M_{i-1/2,j}^{n+1/2} = \frac{A}{B} - \frac{T_s}{\rho_m B} \Delta t \frac{M_{i-1/2,j}^{n+1/2}}{|u|h} \tag{47}$$

In which,

$$A = -P_{MF} \Delta t + M_{i-1/2,j}^{n-1/2}$$

$$B = 1 + \left(\frac{K_T}{\rho_m h_{i-1/2,j}^n} \right) \Delta t$$

$$K_T = \frac{25}{4} (k_g \rho_s (1 - e^2) c_s^{1/3} + k_f \rho_l (1 - c_s)^{5/3} c_s^{2/3}) \left(\frac{d}{h_{i-1/2,j}^n} \right)^2 |u|h \tag{48}$$

The flux on y -axis is obtained with a similar method:

$$\frac{N_{i,j-1/2}^{n+1/2} - N_{i,j-1/2}^{n-1/2}}{\Delta t} + P_{NX} + P_{NY} = P_{NGZ} + P_{NF} \tag{49}$$

The finite difference scheme can also be applied for the Mohr-Coulomb constitutive equation. The shear stress (\mathbf{T}) for the Mohr-Coulomb model is described in Eq. (50) as follows:

$$\mathbf{T}_s = H_c + \rho_m g_z h_{i,j} \cos \theta_{i,j} \tan \phi_s \frac{M_{i-1/2,j}^{n-1/2}}{|\mathbf{u}|h} \quad (50)$$

In which,

$$A = -P_{MF} \Delta t + M_{i-1/2,j}^{n-1/2} \quad ; \text{ dan } B = 1$$

3.2.2 Continuity Equation

Each erosion law is incorporated in the continuity equation. The following is the erosion rate equation to calculate the height of the landslide mass on the next step:

- a. Erosion Law of Egashira, Itoh and Takeuchi (2001)

$$\frac{\partial h}{\partial t} + \nabla \mathbf{M} + e_r = 0$$

In which,

$$\frac{\partial h}{\partial t} = \frac{h_{i,j}^{n+1} - h_{i,j}^n}{\Delta t} \quad ;$$

$$\frac{\partial M}{\partial x} = \frac{M_{i+1/2,j}^{n+1/2} - M_{i-1/2,j}^{n+1/2}}{\Delta x}$$

$$\frac{\partial N}{\partial y} = \frac{N_{i+1/2,j}^{n+1/2} - N_{i-1/2,j}^{n+1/2}}{\Delta y}$$

$$e_r = Kc_* \frac{\partial u}{\partial x} \tan(\theta - \theta_e)$$

Therefore, the h value is obtained on the next equation:

$$h_{i,j}^{n+1} = h_{i,j}^n + \frac{\Delta t}{\Delta x} \left((M_{i-1/2,j}^{n+1/2} - M_{i+1/2,j}^{n+1/2}) + Kc_* (u_{i-1/2,j}^{n+1/2} - u_{i+1/2,j}^{n+1/2}) \tan(\theta - \theta_e) \right) + \frac{\Delta t}{\Delta y} \left((N_{i-1/2,j}^{n+1/2} - N_{i+1/2,j}^{n+1/2}) + Kc_* (v_{i-1/2,j}^{n+1/2} - v_{i+1/2,j}^{n+1/2}) \tan(\theta - \theta_e) \right) \quad (51)$$

- b. Erosion Law of McDougall and Hungr (2005)

As for the erosion law of McDougall and Hungr, the h value on the next step is obtained with a similar method:

$$e_r = \frac{\ln(V_f/V_0)}{l} \frac{\partial u}{\partial x} \frac{\partial h}{\partial t}$$

Therefore, the h value on the next calculation is:

$$h_{i,j}^{n+1} = h_{i,j}^n + (M_{i-1/2,j}^{n+1/2} - M_{i+1/2,j}^{n+1/2}) \frac{\Delta t}{\left(1 + \frac{\ln(V_f/V_0)}{l} \left(\frac{u_{i+1/2,j}^{n+1/2} - u_{i-1/2,j}^{n+1/2}}{\Delta x} \right) \right)} \Delta x + (N_{i-1/2,j}^{n+1/2} - N_{i+1/2,j}^{n+1/2}) \frac{\Delta t}{\left(1 + \frac{\ln(V_f/V_0)}{l} \left(\frac{v_{i+1/2,j}^{n+1/2} - v_{i-1/2,j}^{n+1/2}}{\Delta y} \right) \right)} \Delta y \quad (52)$$

- c. Erosion Law of Blanc (2008)

The height of landslide mass on the next step is obtained with a similar method; the difference is on the erosion formula. As for the erosion law of Blanc (2008), the h value on the next step is:

$$h_{i,j}^{n+1} = h_{i,j}^n + (M_{i-1/2,j}^{n+1/2} - M_{i+1/2,j}^{n+1/2}) \frac{\Delta t}{\left(1 + K \left(\frac{u_{i+1/2,j}^{n+1/2} - u_{i-1/2,j}^{n+1/2}}{\Delta x} \right) \tan \phi^{2.5} \right)} \Delta x + (N_{i-1/2,j}^{n+1/2} - N_{i+1/2,j}^{n+1/2}) \frac{\Delta t}{\left(1 + K \left(\frac{v_{i+1/2,j}^{n+1/2} - v_{i-1/2,j}^{n+1/2}}{\Delta y} \right) \tan \phi^{2.5} \right)} \Delta y \quad (53)$$

3.2.3. Boundary Condition

As described in the continuity equation, erosion (e_r) is a function of landslide mass height. When e_r is negative, it is considered that volume reduction does not occur; therefore, there is no reduction of h caused by erosion. Apart from erosion, the change in h value arises from the condition in which the landslide height at one point decreases due to the movement to the next point according to the exiting flux.

Large Δt can cause a negative h value. A correction is needed to avoid a negative momentum value on the next step. The boundary condition was corrected to generate an accurate value. The correction was carried out by replacing the $h < 0$ value into $h = 0$ in the adjacent mesh according to the exiting flux.

3.2.4. Numerical Model Flow Chart

Calculation steps on the simulation program are shown in Figure 3. Input parameters can be determined directly on the program, while topography can be exported with Excel data. The calculation steps were started with an initial condition, where the initial data was used as the input for calculation on 1st step. The initial Flux calculation flow chart is shown in Figure 4. If the total of the occurring flux is equal to zero, it means there is no movement; thus, the landslide mass stops. The flux with the value of zero results in the flux value on the next step to

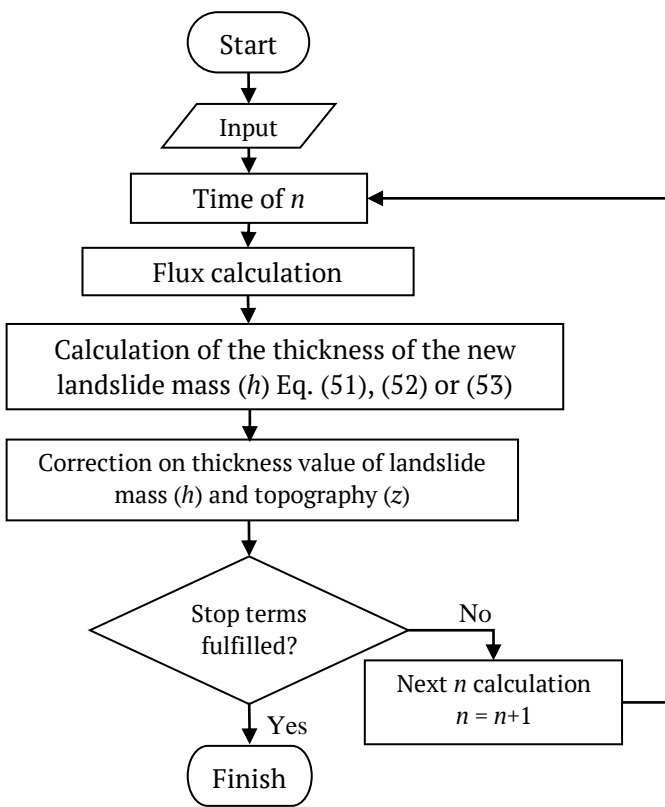


Figure 3. Flowchart of simulation program calculation description on finite difference scheme.

condition was in static, while the 1st step was for starting of the movement. The thickness of new landslide mass was calculated by implementing the three erosion laws. The calculation kept working until stopping term was fulfilled. If the stopping term is not fulfilled, the calculation procedure will redefine the thickness of the new landslide mass on the next step ($n = n+1$).

be equal to zero. If the flux calculation result does not equal to zero, then the flux on the next step is defined based on previous equations.

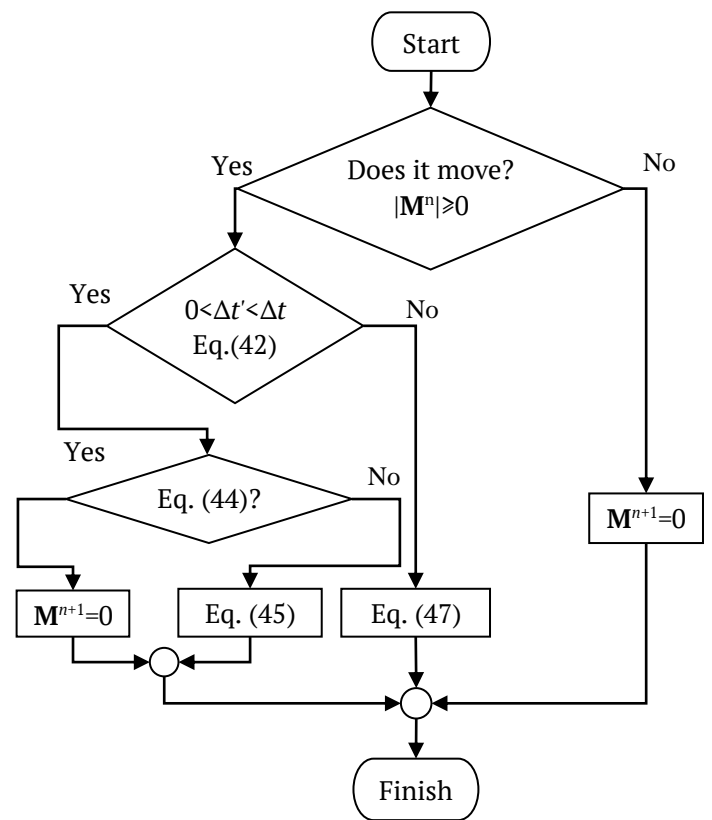


Figure 4. Flowchart of simulation program calculation.

4 CONCLUSIONS SIMULATION MODEL AND NUMERICAL EQUATION SCHEME

4.1 Manual Calculation

In the simulation program, the solution from the partial differential equation solution was approached with a finite difference scheme. To prove that the simulation program is stable, a manual calculation was also conducted in parallel in one of the observed points. A Calculation was conducted in the first step up to

the third step as the description of calculation for static condition and moving condition.

4.2 Numerical Simulations with Additional Erosion Formula

In this research, the newly developed model was examined on an imaginary slope. The imaginary slope was inclined plane by 35° angle and

combined with a flat plane at the bottom. The landslide mass was located on the top of the ellipsoid-shaped simple slip plane. 2D image of landslide mass and 3D visualization on the imaginary slope are shown in Figure 5. This imaginary slope was also used in the research of Fathani, Legono and Alfath (2017) to model the landslide movement with constant landslide volume.

The erosion formula of Egashira, Itoh and Takeuchi (2001) needs an input of the solid phase concentration of volume in a packed state (c^*), angle of the eroded slope (θ), equilibrium angle of the eroded slope (θ_e), and K factor. The numerical simulation result of the landslide movement by the erosion formula of Egashira, Itoh and Takeuchi (2001) showed that the landslide mass started to move in relatively low velocity in the first second and had not reached the flat plane yet. By that time, the maximum landslide mass thickness was 8.612 m. After 3 seconds, the landslide mass moved significantly and spread on the flat plane. The maximum thickness of the landslide movement was 6.607 m. The increasing volume still occurred in the 5th second with a large increasing rate; the maximum landslide mass thickness was 3.028 m.

This happened because the velocity kept increasing until it reached the maximum velocity. After 7 seconds, the landslide coverage still occurred with a wide range of movement on the flat plane. In the 12th second, the certain mesh was still moving with a relatively low velocity. The iteration on the simulation program was limited to 2000th step (in the 20th second) because of very low velocity (less than 0.1 m/s); therefore it did not change the landslide coverage area. (V_0), the estimated total volume entering the zone (V_f), and the approximate average path length of the zone (l).

The result of the numerical simulation on the landslide movement by McDougall and Hungr (2005) showed that the landslide material started to move in relatively low speed at the time of 1 second.

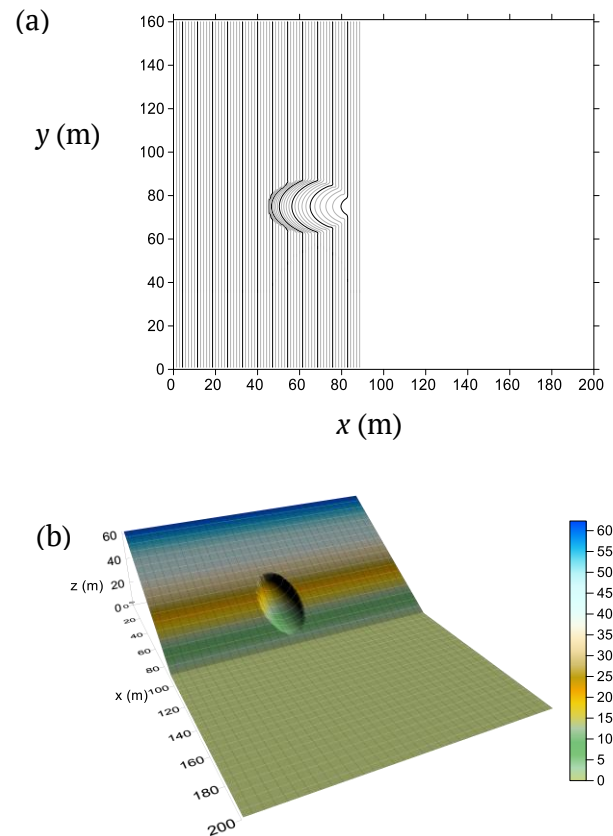


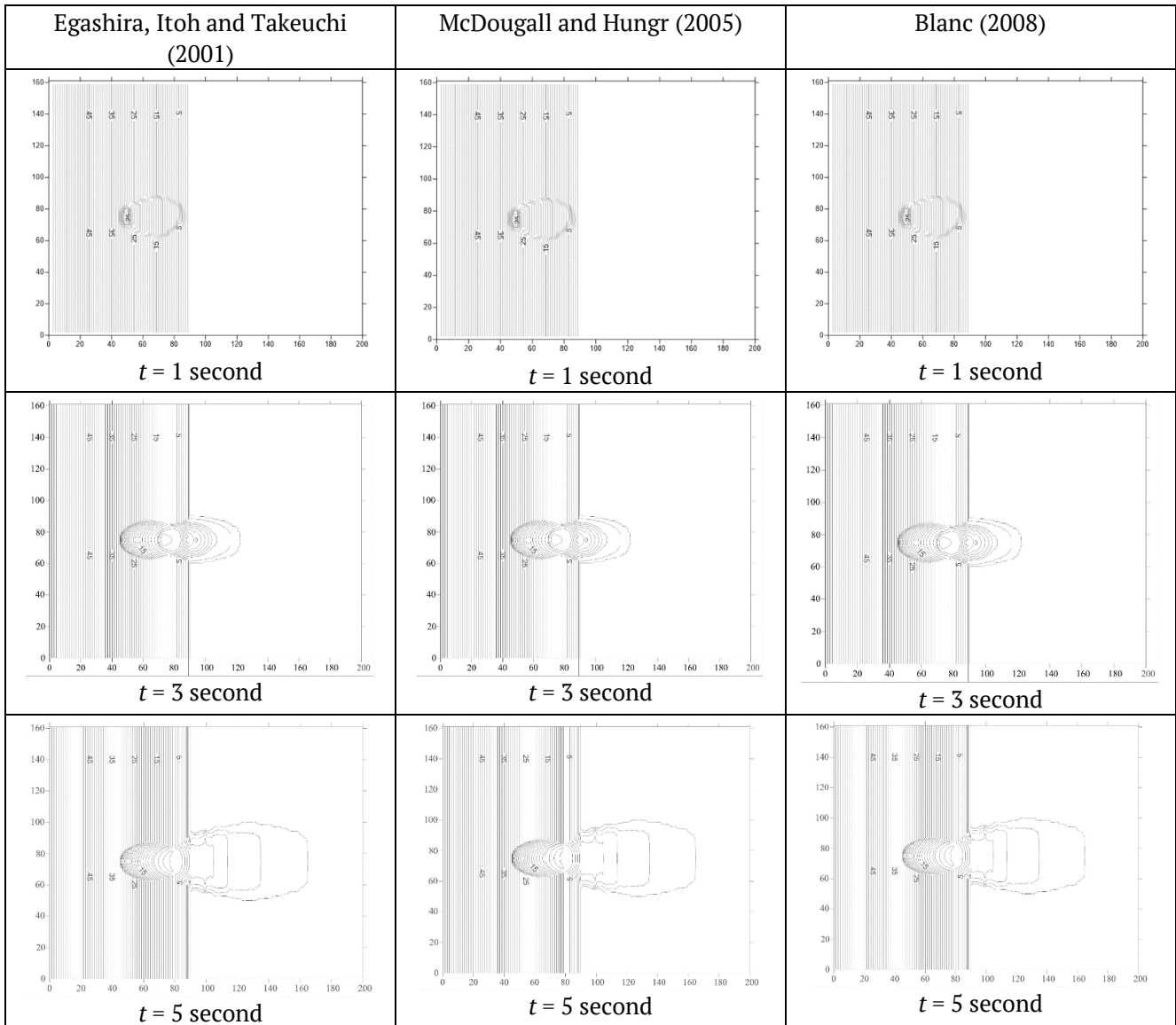
Figure 5. a) 2D image of landslide mass; b) 3D visualization with ellipsoid-shaped source area.

The erosion formula from McDougall and Hungr (2005) needs the input parameters in the form of the estimated total volume entering the zone. By that time, the deposit thickness was 8.603 m and still had not reached the flat plane. In the 3rd second, the landslide mass moved significantly and spread on the flat plane. The maximum thickness of the landslide movement was 6.218 m. The increasing volume still occurred in the 5th second with a large increasing rate; the maximum landslide mass thickness was 3.027 m. This happened because the velocity kept increasing until it reached maximum velocity. In the 7th second, the landslide coverage still occurred with a wide range of movement on the flat plane. In the 12th second, several of certain mesh parts were still moving with a relatively low velocity. The iteration in the simulation program was also limited to 2000th step (in the 20th second).

The erosion formula from Blanc (2008) only requires input parameters in the form of the angle of the eroded slope (θ) and K factor. The numerical simulation result of the landslide

movement by erosion formula from Blanc (2008) showed that the landslide material started to move in relatively low velocity in the 1st second. In the 3rd second, the landslide mass moved significantly and spread on the flat plane with increasing velocity. The volume was still

increasing rapidly in the 5th second. After 7 seconds, the landslide deposit was spreading with a low velocity. In the 12th second, some of mesh was still moving with a relatively low velocity. The simulation result of the three-erosion formula is shown in Figure 6.



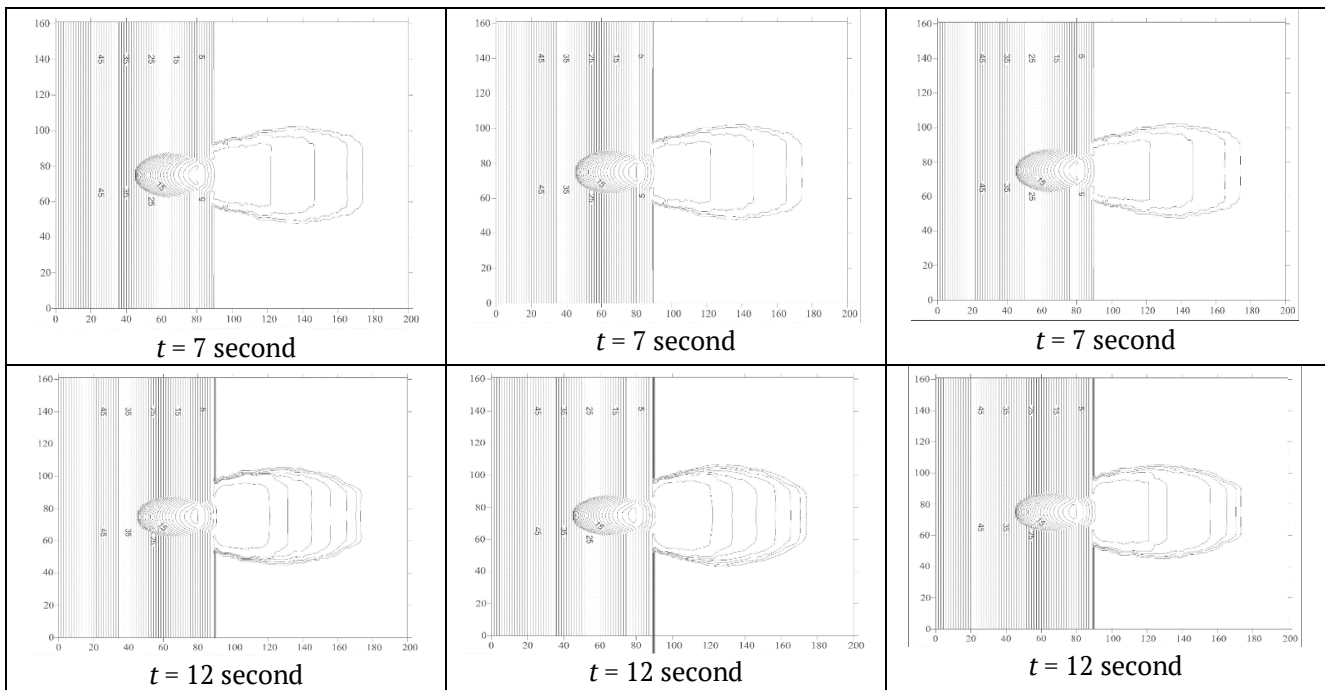


Figure 6. Simulation results of landslide movement by considering erosion formulas

5 DISCUSSION

The result of the simulation suggested that the incorporated erosion law could increase the precision, particularly on the landslide areal extent. The volume addition can be controlled by assuming the erosion rate value where Egashira, Itoh and Takeuchi (2001) and Blanc (2008) use K factor. However, the erosion formula from Blanc (2008) is simpler and does not require any input of the solid phase concentration of the volume in a packed state (c^*), and equilibrium angle of the eroded slope (θ_e). The erosion formula from Blanc (2008) can be applied for various types of rheology. Contrarily, McDougall and Hungr (2005) erosion law can directly determine the comparison value of landslide deposited volume and source area volume, and the length of the eroded zone. The application of erosion law from McDougall and Hungr (2005) is very suitable for landslides that already have previous event data or to model landslide movement with back analysis.

In the newly developed simulation program, back analysis can be conducted with trial and error in the soil and the erosion parameters to get a landslide coverage area coinciding with the actual condition. Soil parameters can be

obtained from laboratory tests or calibration procedures based on field actual conditions. The erosion parameter (E_s , K) is obtained by trial and error with pre-determined soil parameter value assumption. In this case, the erosion law from McDougall and Hungr (2005) provides a better solution as the coordinate and the flow path of the eroded area can be determined. Therefore, it is possible to determine which part will be eroded if being passed by landslide flow whereas the erosion model of (Egashira, Itoh and Takeuchi (2001) and Blanc (2008) depended on the empirical factor value (K) with the assumption that the erosion occurring along the eroded flow path are homogeneous.

6 CONCLUSIONS

This newly developed landslide-movement numerical model that considers erosion and deposition can be used to predict the velocity, affected area, flow depth, and depth of landslide deposit. Using the finite difference method, this model can give a more accurate prediction by considering the volume change in the equation. The simulation result shows that the landslide affected area is enlarged by adding the erosion formula from Egashira et al. (2001), McDougall and Hungr (2005), and Blanc (2008).

The application of McDougall and Hungr (2005) erosion formula is suitable for landslides that have previous event records, or to model landslide movement with back analysis by comparing landslide deposited volume and source volume. The erosion formula from Egashira, Itoh and Takeuchi (2001) can be applied using the rheology model from (Egashira, Miyamoto and Ito (1997) by inputting the concentration of the solid phase of volume in a packed state (c^*), and the equilibrium angle of the eroded slope (θ_e). The erosion formula from Blanc (2008) can be used on various rheology models, as it only needs K factor value as the erosion rate determinant.

To develop the simulation program, calibration on the actual cases is advised. Furthermore, the Lagrangian model or mesh-free method can also be used, particularly on the landslide material threshold which is usually displaced very far with thin deposit thickness.

ACKNOWLEDGMENTS

This research is supported by the Centre for Disaster Mitigation and Technological Innovation (GAMA-InaTEK), Universitas Gadjah Mada, Yogyakarta, INDONESIA.

REFERENCES

- Blanc, T. (2008) *Numerical simulation of debris flows with the 2D-SPH depth integrated model*. na.
- Chen, H., Crosta, G. B. and Lee, C. F. (2006) 'Erosional effects on runout of fast landslides, debris flows and avalanches: a numerical investigation', *Géotechnique*, 56(5), pp. 305–322. doi: 10.1680/geot.2006.56.5.305.
- Egashira, S., Ashida, K. and Takahama, J. (1989) 'Constitutive equation of debris flow', *Ann., D. P. R. I., Kyoto Univ.*, 32(2), pp. 487–501. Available at: <http://ci.nii.ac.jp/naid/10006781514/en/> (Accessed: 28 May 2019).
- Egashira, S. (1993) 'Mechanism of sediment deposition from debris flow (part 1)', *Journal of the Japan of the Society of Erosion Control Engineering*, 46(1), p. 186.
- Egashira, S. (1997) 'Constitutive equations of debris flow and their applicability', in *Proc. 1st Int. Conf. on Debris-Flow Hazards Mitigation, 1997*, pp. 340–349.
- Egashira, S., Itoh, T. and Takeuchi, H. (2001) 'Transition mechanism of debris flows over rigid bed to over erodible bed', *Physics and Chemistry of the Earth, Part B: Hydrology, Oceans and Atmosphere*. Elsevier, 26(2), pp. 169–174.
- Egashira, S., Miyamoto, K. and Ito, T. (1997) 'Bed-load rate in view of two phase flow dynamics', *Proceedings of Hydraulic Engineering*. Japan Society of Civil Engineers, 41, pp. 789–794.
- Fathani, T. F., Legono, D. and Alfath, M. A. (2017) 'Sensitivity Analysis of Depth-Integrated Numerical Models for Estimating Landslide Movement', *Journal of Disaster Research*. Fuji Technology Press Ltd., 12(3), pp. 607–616.
- Fathani, T. F., Legono, D. and Karnawati, D. (2017) 'A numerical model for the analysis of rapid landslide motion', *Geotechnical and Geological Engineering*. Springer, 35(5), pp. 2253–2268.
- Hungr, O. (1995) 'A model for the runout analysis of rapid flow slides, debris flows, and avalanches', *Canadian Geotechnical Journal*. NRC Research Press, 32(4), pp. 610–623.
- Hungr, O. (2007) 'Dynamics of rapid landslides', in *Progress in landslide science*. Springer, pp. 47–57.
- Hungr, O. and Evans, S. G. (2004) 'Entrainment of debris in rock avalanches: An analysis of a long run-out mechanism', *GSA Bulletin*, 116(9–10), pp. 1240–1252. doi: 10.1130/B25362.1.
- McDougall, S. and Hungr, O. (2004) 'A model for the analysis of rapid landslide motion across three-dimensional terrain', *Canadian Geotechnical Journal*. NRC Research Press, 41(6), pp. 1084–1097.

McDougall, S. and Hungr, O. (2005) 'Dynamic modelling of entrainment in rapid landslides', *Canadian Geotechnical Journal*. NRC Research Press, 42(5), pp. 1437–1448.

Miyamoto, K. (2010) 'Numerical simulation of landslide movement and Unzen-Mayuyama disaster in 1792, Japan', *Journal of Disaster Research*. Fuji Technology Press, 5(3), pp. 280–287.

Pastor, M. *et al.* (2014) 'Application of a SPH depth-integrated model to landslide run-out analysis', *Landslides*. Springer, 11(5), pp. 793–812.

Pirulli, M. and Pastor, M. (2012) 'Numerical study on the entrainment of bed material into rapid landslides', *Geotechnique*. Thomas Telford, Ltd., Thomas Telford House London E 14 4 JD United Kingdom, 62(11), pp. 959–972.

[This page is intentionally left blank]